

Datasheet for ABIN1306804
HMGB2 Protein (AA 1-209) (GST tag)



[Go to Product page](#)

1 Image

Overview

Quantity:	10 µg
Target:	HMGB2
Protein Characteristics:	AA 1-209
Origin:	Human
Source:	Wheat germ
Protein Type:	Recombinant
Purification tag / Conjugate:	This HMGB2 protein is labelled with GST tag.
Application:	Western Blotting (WB), ELISA, Affinity Purification (AP), Antibody Array (AA)

Product Details

Purpose:	HMGB2 (Human) Recombinant Protein (P02)
Sequence:	MGKGDPNKPR GKMSYAFFV QTCREEHKKK HPDSSVNFAE FSKKCSERWK TMSAKEKSKF EDMAKSDKAR YDREMKNYVP PKGDKKGKKK DPNAPKRPPS AFFLFCSEHR PKIKSEHPGL SIGDTAKKLG EMWSEQSAKD KQPYEQKAAK LKEYEKDIA AYRAKGKSEA GKKGPGRPTG SKKKNEPEDE EEEEEEEDED EEEEEDEE
Characteristics:	Human HMGB2 full-length ORF (NP_002120.1, 1 a.a. - 209 a.a.) recombinant protein with GST tag at N-terminal.
Purification:	in vitro wheat germ expression system

Target Details

Target:	HMGB2
---------	-------

Target Details

Alternative Name:	HMGB2 (HMGB2 Products)
Background:	Full Gene Name: high-mobility group box 2 Synonyms: HMG2
Gene ID:	3148
NCBI Accession:	NM_002129
Pathways:	Cellular Response to Molecule of Bacterial Origin

Application Details

Application Notes:	Optimal working dilution should be determined by the investigator.
Comment:	Preparation method: in vitro, wheat germ expression system Product Quality tested by: 12.5% SDS-PAGE Stained with Coomassie Blue
Restrictions:	For Research Use only

Handling

Buffer:	50 mM Tris-HCl, 10 mM reduced Glutathione, pH =8.0 in the elution buffer.
Handling Advice:	Aliquot to avoid repeated freezing and thawing.
Storage:	-80 °C
Storage Comment:	Best use within three months from the date of receipt of this protein.

Images

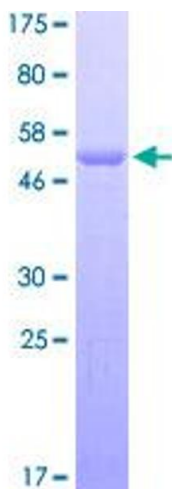


Image 1.