

Datasheet for ABIN1306820

HMGCS2 Protein (AA 424-508) (GST tag)[Go to Product page](#)**1** Image

Overview

Quantity:	10 µg
Target:	HMGCS2
Protein Characteristics:	AA 424-508
Origin:	Human
Source:	Wheat germ
Protein Type:	Recombinant
Purification tag / Conjugate:	This HMGCS2 protein is labelled with GST tag.
Application:	ELISA, Western Blotting (WB), Affinity Purification (AP), Antibody Array (AA)

Product Details

Purpose:	HMGCS2 (Human) Recombinant Protein (Q01)
Sequence:	RVSQDAAPGS PLDKLVSSTS DLPKRLASRK CVSPEEFTEI MNQREQFYHK VNFSPPGDTN SLFPGTWYLE RVDEQHRRKY ARRPV
Characteristics:	Human HMGCS2 partial ORF (NP_005509.1, 424 a.a. - 508 a.a.) recombinant protein with GST-tag at N-terminal.
Purification:	in vitro wheat germ expression system

Target Details

Target:	HMGCS2
Alternative Name:	HMGCS2 (HMGCS2 Products)

Target Details

Background:	Full Gene Name: 3-hydroxy-3-methylglutaryl-Coenzyme A synthase 2 (mitochondrial) Synonyms:
Gene ID:	3158
NCBI Accession:	NM_005518
Pathways:	Response to Growth Hormone Stimulus , Cellular Response to Molecule of Bacterial Origin , Regulation of Lipid Metabolism by PPARalpha

Application Details

Application Notes:	Optimal working dilution should be determined by the investigator.
Comment:	Preparation method: in vitro, wheat germ expression system Product Quality tested by: 12.5% SDS-PAGE Stained with Coomassie Blue.
Restrictions:	For Research Use only

Handling

Buffer:	50 mM Tris-HCl, 10 mM reduced Glutathione, pH =8.0 in the elution buffer.
Handling Advice:	Aliquot to avoid repeated freezing and thawing.
Storage:	-80 °C
Storage Comment:	Best use within three months from the date of receipt of this protein.

Images

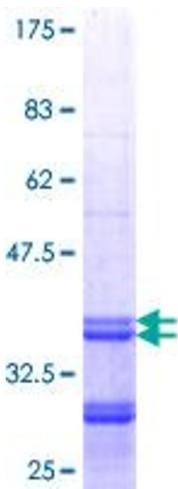


Image 1.