



[Go to Product page](#)

Datasheet for ABIN1306833

## HMHA1 Protein (AA 91-190) (GST tag)

### 1 Image

#### Overview

Quantity:	10 µg
Target:	HMHA1
Protein Characteristics:	AA 91-190
Origin:	Human
Source:	Wheat germ
Protein Type:	Recombinant
Purification tag / Conjugate:	This HMHA1 protein is labelled with GST tag.
Application:	Western Blotting (WB), ELISA, Affinity Purification (AP), Antibody Array (AA)

#### Product Details

Purpose:	HMHA1 (Human) Recombinant Protein (Q01)
Sequence:	HRSPLTAASP GELPTEGAGP DVVEDISHLL ADVARFAEGL EKLKECVLHD DLLEARRPRA HECLGEALRV MHQIISKYPL LNTVETLTAA GTLIAKVKAF
Characteristics:	Human HMHA1 partial ORF ( AAH65223.1, 91 a.a. - 190 a.a.) recombinant protein with GST-tag at N-terminal.
Purification:	in vitro wheat germ expression system

#### Target Details

Target:	HMHA1
Alternative Name:	HMHA1 ( <a href="#">HMHA1 Products</a> )

## Target Details

Background: Full Gene Name: histocompatibility (minor) HA-1  
Synonyms: HA-1,HLA-HA1,KIAA0223

Gene ID: 23526

## Application Details

Application Notes: Optimal working dilution should be determined by the investigator.

Comment: Preparation method: in vitro, wheat germ expression system  
Product Quality tested by: 12.5% SDS-PAGE Stained with Coomassie Blue.

Restrictions: For Research Use only

## Handling

Buffer: 50 mM Tris-HCl, 10 mM reduced Glutathione, pH =8.0 in the elution buffer.

Handling Advice: Aliquot to avoid repeated freezing and thawing.

Storage: -80 °C

Storage Comment: Best use within three months from the date of receipt of this protein.

## Images

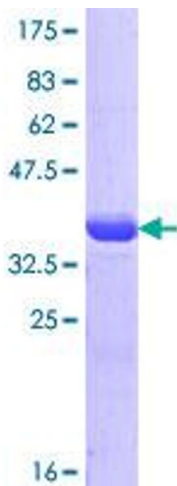


Image 1.