

Datasheet for ABIN1306848  
**HN1L Protein (AA 1-190) (GST tag)**



[Go to Product page](#)

1 Image

Overview

Quantity:	10 µg
Target:	HN1L
Protein Characteristics:	AA 1-190
Origin:	Human
Source:	Wheat germ
Protein Type:	Recombinant
Purification tag / Conjugate:	This HN1L protein is labelled with GST tag.
Application:	ELISA, Western Blotting (WB), Affinity Purification (AP), Antibody Array (AA)

Product Details

Purpose:	C16orf34 (Human) Recombinant Protein (P01)
Sequence:	MFQVPDSEGG RAGSRAMKPP GGESSNLFGS PEEATPSSRP NRMASNIFGP TEEPQNIPKR TNPPGGKGGSG IFDESTPVQT RQHLNPPGGK TSDIFGSPVT ATSRLAHPNK PKDHVFLCEG EEPKSDLKAA RSIPAGAEPG EKGSARKAGP AKEQEPMP TV DSHEPRLGPR PRSHNKVLNP PGGKSSISFY
Characteristics:	Human C16orf34 full-length ORF ( NP_653171.1, 1 a.a. - 190 a.a.) recombinant protein with GST-tag at N-terminal.
Purification:	in vitro wheat germ expression system

Target Details

Target:	HN1L
---------	------

## Target Details

Alternative Name:	HN1L ( <a href="#">HN1L Products</a> )
Background:	Full Gene Name: hematological and neurological expressed 1-like Synonyms: C16orf34,FLJ13092,KIAA1426,L11
Gene ID:	90861
NCBI Accession:	<a href="#">NM_144570</a>

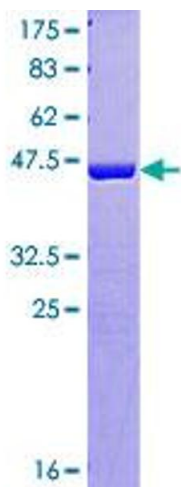
## Application Details

Application Notes:	Optimal working dilution should be determined by the investigator.
Comment:	Preparation method: in vitro, wheat germ expression system Product Quality tested by: 12.5% SDS-PAGE Stained with Coomassie Blue.
Restrictions:	For Research Use only

## Handling

Buffer:	50 mM Tris-HCl, 10 mM reduced Glutathione, pH =8.0 in the elution buffer.
Handling Advice:	Aliquot to avoid repeated freezing and thawing.
Storage:	-80 °C
Storage Comment:	Best use within three months from the date of receipt of this protein.

## Images



**Image 1.**