

Datasheet for ABIN1306892

HOMER1 Protein (AA 1-354) (GST tag)



[Go to Product page](#)

1 Image

Overview

Quantity:	10 µg
Target:	HOMER1
Protein Characteristics:	AA 1-354
Origin:	Human
Source:	Wheat germ
Protein Type:	Recombinant
Purification tag / Conjugate:	This HOMER1 protein is labelled with GST tag.
Application:	ELISA, Western Blotting (WB), Affinity Purification (AP), Antibody Array (AA)

Product Details

Purpose:	HOMER1 (Human) Recombinant Protein (P01)
Sequence:	MGEQPIFSTR AHVFQIDPNT KKNWVPTSKH AVTVSYFYDS TRNVYRIISL DGSKAIINST ITPNMTFTKT SQKFGQWADS RANTVYGLGF SSEHLSKFA EKQEFKEAA RLAKEKSQEK MELTSTPSQE SAGGDLQSPL TPESINGTDD ERTPDVTQNS EPRAEPTQNA LPFSHSSAIS KHWEAELATL KGNNAKLTAA LLESTANVKQ WKQQLAAYQE EAERLHKRVT ELECVCSSQAN AVHTHKTELN QTIQELEETL KLKEEEIERL KQEIDNAREL QEQRDSLQK LQEVEIRNKD LEGQLSDLEQ RLEKSQNEQE AFRNNLKTLL EILDGKIFEL TELRDNLAKL LECS
Characteristics:	Human HOMER1 full-length ORF (AAH15502, 1 a.a. - 354 a.a.) recombinant protein with GST-tag at N-terminal.
Purification:	in vitro wheat germ expression system

Target Details

Target:	HOMER1
Alternative Name:	HOMER1 (HOMER1 Products)
Background:	Full Gene Name: homer homolog 1 (Drosophila) Synonyms: HOMER,HOMER1A,HOMER1B,HOMER1C,SYN47,Ves-1
Gene ID:	9456
Pathways:	Skeletal Muscle Fiber Development

Application Details

Application Notes:	Optimal working dilution should be determined by the investigator.
Comment:	Preparation method: in vitro, wheat germ expression system Product Quality tested by: 12.5% SDS-PAGE Stained with Coomassie Blue.
Restrictions:	For Research Use only

Handling

Buffer:	50 mM Tris-HCl, 10 mM reduced Glutathione, pH =8.0 in the elution buffer.
Handling Advice:	Aliquot to avoid repeated freezing and thawing.
Storage:	-80 °C
Storage Comment:	Best use within three months from the date of receipt of this protein.

Images

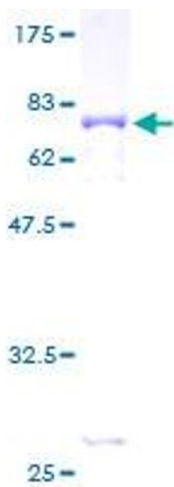


Image 1.