



[Go to Product page](#)

Datasheet for ABIN1306935

## HOXA6 Protein (AA 1-233) (GST tag)

### 1 Image

#### Overview

Quantity:	25 µg
Target:	HOXA6
Protein Characteristics:	AA 1-233
Origin:	Human
Source:	Wheat germ
Protein Type:	Recombinant
Purification tag / Conjugate:	This HOXA6 protein is labelled with GST tag.
Application:	ELISA, Western Blotting (WB), Affinity Purification (AP), Antibody Array (AA)

#### Product Details

Purpose:	HOXA6 (Human) Recombinant Protein (P01)
Sequence:	MSSYFVNPTF PGSLPSGQDS FLGQLPLYQA GYDALRPFFA SYGASSLPDK TYTSPCFYQQ SNSVLACNRA SYEYGASCFY SDKDLGASP SGSGKQRGPG DYLFHSPEQQ YKPDSSSGQG KALHDEGADR KYTSPVYPWM QRMNSCAGAV YGSHGRRGRQ TYTRYQTLEL EKEFHFNRYL TRRRRIEIAN ALCLTERQIK IWFQNRMMKW KKENKLINST QPSGEDSEAK AGE
Characteristics:	Human HOXA6 full-length ORF ( NP_076919.1, 1 a.a. - 233 a.a.) recombinant protein with GST-tag at N-terminal.
Purification:	in vitro wheat germ expression system

#### Target Details

Target:	HOXA6
---------	-------

## Target Details

Alternative Name:	HOXA6 ( <a href="#">HOXA6 Products</a> )
Background:	Full Gene Name: homeobox A6 Synonyms: HOX1,HOX1.2,HOX1B
Gene ID:	3203
NCBI Accession:	<a href="#">NM_024014</a>

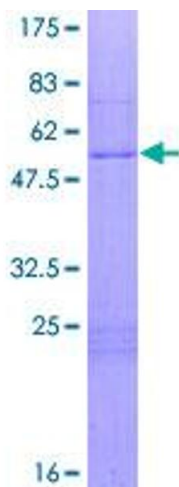
## Application Details

Application Notes:	Optimal working dilution should be determined by the investigator.
Comment:	Preparation method: in vitro, wheat germ expression system Product Quality tested by: 12.5% SDS-PAGE Stained with Coomassie Blue.
Restrictions:	For Research Use only

## Handling

Buffer:	50 mM Tris-HCl, 10 mM reduced Glutathione, pH =8.0 in the elution buffer.
Handling Advice:	Aliquot to avoid repeated freezing and thawing.
Storage:	-80 °C
Storage Comment:	Best use within three months from the date of receipt of this protein.

## Images



**Image 1.**