



[Go to Product page](#)

Datasheet for ABIN1307020

HP1BP3 Protein (AA 1-553) (GST tag)

1 Image

Overview

Quantity:	25 µg
Target:	HP1BP3
Protein Characteristics:	AA 1-553
Origin:	Human
Source:	Wheat germ
Protein Type:	Recombinant
Purification tag / Conjugate:	This HP1BP3 protein is labelled with GST tag.
Application:	ELISA, Western Blotting (WB), Affinity Purification (AP), Antibody Array (AA)

Product Details

Purpose:	HP1BP3 (Human) Recombinant Protein (P01)
Sequence:	<p>MATDTSQGEL VHPKALPLIV GAQLIHADKL GEKVEDSTMP IRRTVNSTRE TPPKSKLAEG EEEKPEPDIS SEESVSTVEE QENETPPATS SEAEQPKGEP ENEEKEENKS SEETKKDEKD QSKEKEKKVK KTIPSWATLS ASQLARAQKQ TPMASSPRPK MDAILTEAIK ACFQKSGASV VAIRKYIIHK YPSLELERRG YLLKQALKRE LNRGVIKQVK GKGASGSFVV VQKSRKTPQK SRNRKNRSSA VDPEPQVKLE DVLPLAFTRL CEPKEASYSL IRKYVSQYYP KLRVDIRPQL LKNALQRAVE RGQLEQITGK GASGTFQLKK SGEKPLLGG S LMEYAILS AI AAMNEPKTCS TTALKKYVLE NHPGTNSNYQ MHLKKTLLQK CEKNGWMEQI SGKGFSGTFQ LCFPYYPSPG VLFPKKEPDD SRDEDEDEDE SSEEDSEDEE PPPKRRQLKK TPAKSPGKAA SVKQRGSKPA PKVSAAQRGK ARPLPKKAPP KAKTPAKKTR PSSTVIKKPS GGSSKKPATS ARKEVKLPGK GKSTMKKSFR VKK</p>
Characteristics:	Human HP1BP3 full-length ORF (NP_057371.2, 1 a.a. - 553 a.a.) recombinant protein with GST-

Product Details

tag at N-terminal.

Purification: in vitro wheat germ expression system

Target Details

Target: HP1BP3

Alternative Name: HP1BP3 ([HP1BP3 Products](#))

Background: Full Gene Name: heterochromatin protein 1, binding protein 3
Synonyms: HP1-BP74,MGC43701

Gene ID: 50809

NCBI Accession: [NM_016287](#)

Application Details

Application Notes: Optimal working dilution should be determined by the investigator.

Comment: Preparation method: in vitro, wheat germ expression system
Product Quality tested by: 12.5% SDS-PAGE Stained with Coomassie Blue.

Restrictions: For Research Use only

Handling

Buffer: 50 mM Tris-HCl, 10 mM reduced Glutathione, pH =8.0 in the elution buffer.

Handling Advice: Aliquot to avoid repeated freezing and thawing.

Storage: -80 °C

Storage Comment: Best use within three months from the date of receipt of this protein.

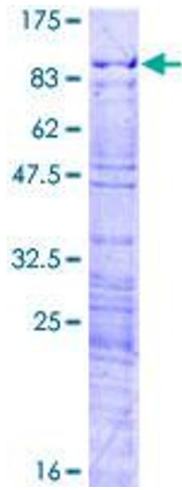


Image 1.