

Datasheet for ABIN1307039
HPS1 Protein (AA 1-324) (GST tag)



[Go to Product page](#)

1 Image

Overview

Quantity:	10 µg
Target:	HPS1
Protein Characteristics:	AA 1-324
Origin:	Human
Source:	Wheat germ
Protein Type:	Recombinant
Purification tag / Conjugate:	This HPS1 protein is labelled with GST tag.
Application:	Western Blotting (WB), ELISA, Affinity Purification (AP), Antibody Array (AA)

Product Details

Purpose:	HPS1 (Human) Recombinant Protein (P02)
Sequence:	MKCVLVATEG AEVLFYWTDQ EFEESLRLKF GQSENEEEEL PALEDQLSTL LAPVISSMT MLEKLSDTYT CFSTENGNFL YVLHLFGECL FIAINGDHTE SEGDLRRKLY VLKYLFEVHF GLVTVDGHLI RKELRPPDLA QRVQLWEHFQ SLLWTYSRLR EQEQCFAVEA LERLIHPQLC ELCIEALERH VIQAVNTSPE RGGEEALHAF LLVHSKLLAF YSSHSASSLR PADLLALILL VQDLYPSEST AEDDIQSPR RARSSQNIPV QQAWSPHSTG PTGGSSAETE TDSFSLPEEY FTPAPSPGDQ SSGEDRRKAG GNNS
Characteristics:	Human HPS1 full-length ORF (NP_872577.1, 1 a.a. - 324 a.a.) recombinant protein with GST-tag at N-terminal.
Purification:	in vitro wheat germ expression system

Target Details

Target:	HPS1
Alternative Name:	HPS1 (HPS1 Products)
Background:	Full Gene Name: Hermansky-Pudlak syndrome 1 Synonyms: HPS,MGC5277
Gene ID:	3257
NCBI Accession:	NM_182639

Application Details

Application Notes:	Optimal working dilution should be determined by the investigator.
Comment:	Preparation method: in vitro, wheat germ expression system Product Quality tested by: 12.5% SDS-PAGE Stained with Coomassie Blue.
Restrictions:	For Research Use only

Handling

Buffer:	50 mM Tris-HCl, 10 mM reduced Glutathione, pH =8.0 in the elution buffer.
Handling Advice:	Aliquot to avoid repeated freezing and thawing.
Storage:	-80 °C
Storage Comment:	Best use within three months from the date of receipt of this protein.

Images

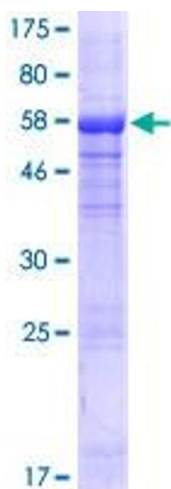


Image 1.