



[Go to Product page](#)

Datasheet for ABIN1307077

HS1BP3 Protein (AA 1-213) (GST tag)

1 Image

Overview

Quantity:	10 µg
Target:	HS1BP3
Protein Characteristics:	AA 1-213
Origin:	Human
Source:	Wheat germ
Protein Type:	Recombinant
Purification tag / Conjugate:	This HS1BP3 protein is labelled with GST tag.
Application:	ELISA, Western Blotting (WB), Affinity Purification (AP), Antibody Array (AA)

Product Details

Purpose:	HS1BP3 (Human) Recombinant Protein (P01)
Sequence:	<p>MQSPAVLVTS RRLQNAHTGL DLTVPQHQEV RGKMMMSGHVE YQILVVTRLA AFKSAKHRPE DVVQFLVSKK YSEIEEFYQK LSSRYAAASL PPLPRKVLV FV GESDIRERRA VFNEILRCVS KDAELAGSPE LLEFLGTRSP GAAGLTSRDS SVLDGTDSQT GNDEEAFDFF EEQDQVAEEG PPVQSLKGED AEESLEEEEA LDPLGIMRLV SCC</p>
Characteristics:	Human HS1BP3 full-length ORF (AAH27947, 1 a.a. - 213 a.a.) recombinant protein with GST-tag at N-terminal.
Purification:	in vitro wheat germ expression system

Target Details

Target:	HS1BP3
---------	--------

Target Details

Alternative Name:	HS1BP3 (HS1BP3 Products)
Background:	Full Gene Name: HCLS1 binding protein 3 Synonyms: ETM2,FLJ14249,HS1-BP3
Gene ID:	64342

Application Details

Application Notes:	Optimal working dilution should be determined by the investigator.
Comment:	Preparation method: in vitro, wheat germ expression system Product Quality tested by: 12.5% SDS-PAGE Stained with Coomassie Blue.
Restrictions:	For Research Use only

Handling

Buffer:	50 mM Tris-HCl, 10 mM reduced Glutathione, pH =8.0 in the elution buffer.
Handling Advice:	Aliquot to avoid repeated freezing and thawing.
Storage:	-80 °C
Storage Comment:	Best use within three months from the date of receipt of this protein.

Images

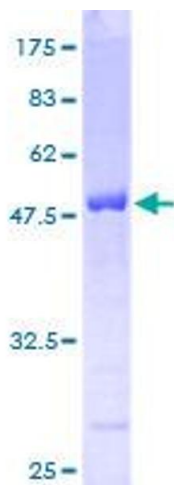


Image 1.