



[Go to Product page](#)

Datasheet for ABIN1307178

## HSH2D Protein (AA 251-352) (GST tag)

### 1 Image

#### Overview

Quantity:	10 µg
Target:	HSH2D
Protein Characteristics:	AA 251-352
Origin:	Human
Source:	Wheat germ
Protein Type:	Recombinant
Purification tag / Conjugate:	This HSH2D protein is labelled with GST tag.
Application:	ELISA, Western Blotting (WB), Affinity Purification (AP), Antibody Array (AA)

#### Product Details

Purpose:	HSH2D (Human) Recombinant Protein (Q01)
Sequence:	SQDHSGDPTS GDRGYTDPCV ATSLKSPSQP QAPKDRKVPT RKAERSVSCI EVTPGDRSWH QMVVRALSSQ ESKPEHQGLA EPENDQLPEE YQPPPFAPG YC
Characteristics:	Human HSH2D partial ORF ( NP_116244.1, 251 a.a. - 352 a.a.) recombinant protein with GST-tag at N-terminal.
Purification:	in vitro wheat germ expression system

#### Target Details

Target:	HSH2D
Alternative Name:	HSH2D ( <a href="#">HSH2D Products</a> )

## Target Details

Background:	Full Gene Name: hematopoietic SH2 domain containing Synonyms: ALX,FLJ14886,HSH2
Gene ID:	84941
NCBI Accession:	<a href="#">NM_032855</a>

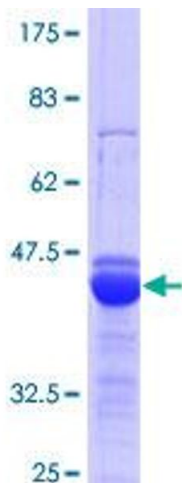
## Application Details

Application Notes:	Optimal working dilution should be determined by the investigator.
Comment:	Preparation method: in vitro, wheat germ expression system Product Quality tested by: 12.5% SDS-PAGE Stained with Coomassie Blue.
Restrictions:	For Research Use only

## Handling

Buffer:	50 mM Tris-HCl, 10 mM reduced Glutathione, pH =8.0 in the elution buffer.
Handling Advice:	Aliquot to avoid repeated freezing and thawing.
Storage:	-80 °C
Storage Comment:	Best use within three months from the date of receipt of this protein.

## Images



**Image 1.**