



[Go to Product page](#)

Datasheet for ABIN1307196

## HSPA1L Protein (AA 561-641) (GST tag)

### 1 Image

#### Overview

Quantity:	10 µg
Target:	HSPA1L
Protein Characteristics:	AA 561-641
Origin:	Human
Source:	Wheat germ
Protein Type:	Recombinant
Purification tag / Conjugate:	This HSPA1L protein is labelled with GST tag.
Application:	Western Blotting (WB), ELISA, Affinity Purification (AP), Antibody Array (AA)

#### Product Details

Purpose:	HSPA1L (Human) Recombinant Protein (Q01)
Sequence:	KGKISESDKN KILDKCNELL SWLEVNQLAE KDEFDHKRKE LEQMCNPIIT KLYQGGCTGP ACGTGYVPGR PATGPTIEEV D
Characteristics:	Human HSPA1L partial ORF ( NP_005518, 561 a.a. - 641 a.a.) recombinant protein with GST-tag at N-terminal.
Purification:	in vitro wheat germ expression system

#### Target Details

Target:	HSPA1L
Alternative Name:	HSPA1L ( <a href="#">HSPA1L Products</a> )

## Target Details

Background:	Full Gene Name: heat shock 70 kDa protein 1-like Synonyms: HSP70-1L,HSP70-HOM,HSP70T,hum70t
Gene ID:	3305
NCBI Accession:	<a href="#">NM_005527</a>

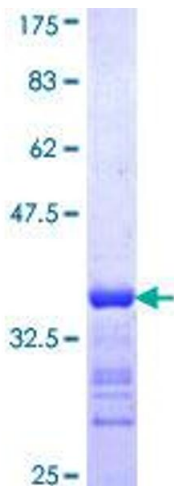
## Application Details

Application Notes:	Optimal working dilution should be determined by the investigator.
Comment:	Preparation method: in vitro, wheat germ expression system Product Quality tested by: 12.5% SDS-PAGE Stained with Coomassie Blue.
Restrictions:	For Research Use only

## Handling

Buffer:	50 mM Tris-HCl, 10 mM reduced Glutathione, pH =8.0 in the elution buffer.
Handling Advice:	Aliquot to avoid repeated freezing and thawing.
Storage:	-80 °C
Storage Comment:	Best use within three months from the date of receipt of this protein.

## Images



**Image 1.**