



[Go to Product page](#)

Datasheet for ABIN1307255

Serotonin Receptor 1A Protein (HTR1A) (AA 1-422) (GST tag)

1 Image

Overview

Quantity:	10 µg
Target:	Serotonin Receptor 1A (HTR1A)
Protein Characteristics:	AA 1-422
Origin:	Human
Source:	Wheat germ
Protein Type:	Recombinant
Purification tag / Conjugate:	This Serotonin Receptor 1A protein is labelled with GST tag.
Application:	Western Blotting (WB), ELISA, Affinity Purification (AP), Antibody Array (AA)

Product Details

Purpose:	HTR1A (Human) Recombinant Protein (P01)
Sequence:	MDVLSPGQGN NTTSPAPFE TGGNTTGISD VTVSYQVITS LLLGTLIFCA VLGNA CVVAA IALERSLQNV ANYLIGSLAV TDLMVSVLVL PMAALYQVLN KWT LGQVTCD LFIALDVLCC TSSILHLCAI ALDRYWAITD PIDYV NK RTP RRAAALISLT WLIGFLISIP PMLGWRTPED RSDPDACTIS KDHGYTIYST FGAFYIPLLL MLVLYGRIFR AARFRIRKTV KKVEKTGADT RHGASPAPQP KKS VNGESGS RNWRLGVESK AGGALCANGA VRQDDGAAL EVIEVHRVGN SKEHLPLPSE AGPTPCAPAS FERKNERNAE AKRKMALARE RKT V KTLGII MGTFILCWLP FFIVALVLPF CESSCHMPTL LGAIINWLGYSNSLLNPVIY AYFNKDFQNA FKKIICKKFC RQ
Characteristics:	Human HTR1A full-length ORF (NP_000515.2, 1 a.a. - 422 a.a.) recombinant protein with GST-tag at N-terminal.
Purification:	in vitro wheat germ expression system

Target Details

Target:	Serotonin Receptor 1A (HTR1A)
Alternative Name:	HTR1A (HTR1A Products)
Background:	Full Gene Name: 5-hydroxytryptamine (serotonin) receptor 1A Synonyms: 5-HT1A,5HT1a,ADRB2RL1,ADRBRL1
Gene ID:	3350
NCBI Accession:	NM_000524
Pathways:	JAK-STAT Signaling , Synaptic Membrane , Feeding Behaviour

Application Details

Application Notes:	Optimal working dilution should be determined by the investigator.
Comment:	Preparation method: in vitro, wheat germ expression system Product Quality tested by: 12.5% SDS-PAGE Stained with Coomassie Blue.
Restrictions:	For Research Use only

Handling

Buffer:	50 mM Tris-HCl, 10 mM reduced Glutathione, pH =8.0 in the elution buffer.
Handling Advice:	Aliquot to avoid repeated freezing and thawing.
Storage:	-80 °C
Storage Comment:	Best use within three months from the date of receipt of this protein.

Images

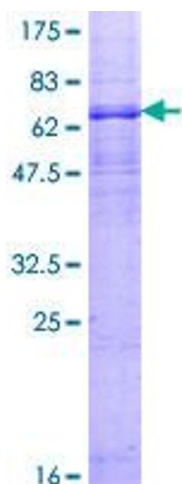


Image 1.