

Datasheet for ABIN1307267
HTR1F Protein (AA 203-279) (GST tag)



[Go to Product page](#)

1 Image

Overview

Quantity:	10 µg
Target:	HTR1F
Protein Characteristics:	AA 203-279
Origin:	Human
Source:	Wheat germ
Protein Type:	Recombinant
Purification tag / Conjugate:	This HTR1F protein is labelled with GST tag.
Application:	ELISA, Western Blotting (WB), Affinity Purification (AP), Antibody Array (AA)

Product Details

Purpose:	HTR1F (Human) Recombinant Protein (Q01)
Sequence:	KIYRAAKTLY HKRQASRIAK EEVNGQVLLE SGEKSTKSVS TSYVLEKSLS DPSTDFDKIH STVRSRSEF KHEKSWR
Characteristics:	Human HTR1F partial ORF (NP_000857, 203 a.a. - 279 a.a.) recombinant protein with GST-tag at N-terminal.
Purification:	in vitro wheat germ expression system

Target Details

Target:	HTR1F
Alternative Name:	HTR1F (HTR1F Products)

Target Details

Background:	Full Gene Name: 5-hydroxytryptamine (serotonin) receptor 1F Synonyms: 5-HT1F,5HT6,HTR1EL,MR77
Gene ID:	3355
NCBI Accession:	NM_000866
Pathways:	JAK-STAT Signaling

Application Details

Application Notes:	Optimal working dilution should be determined by the investigator.
Comment:	Preparation method: in vitro, wheat germ expression system Product Quality tested by: 12.5% SDS-PAGE Stained with Coomassie Blue.
Restrictions:	For Research Use only

Handling

Buffer:	50 mM Tris-HCl, 10 mM reduced Glutathione, pH =8.0 in the elution buffer.
Handling Advice:	Aliquot to avoid repeated freezing and thawing.
Storage:	-80 °C
Storage Comment:	Best use within three months from the date of receipt of this protein.

Images

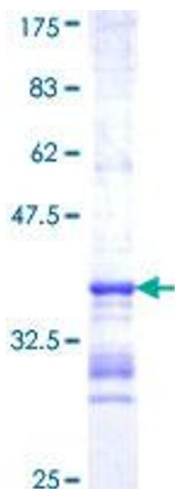


Image 1.