



[Go to Product page](#)

Datasheet for ABIN1307270

Serotonin Receptor 2B Protein (HTR2B) (AA 1-56) (GST tag)

1 Image

Overview

Quantity:	10 µg
Target:	Serotonin Receptor 2B (HTR2B)
Protein Characteristics:	AA 1-56
Origin:	Human
Source:	Wheat germ
Protein Type:	Recombinant
Purification tag / Conjugate:	This Serotonin Receptor 2B protein is labelled with GST tag.
Application:	ELISA, Western Blotting (WB), Affinity Purification (AP), Antibody Array (AA)

Product Details

Purpose:	HTR2B (Human) Recombinant Protein (Q01)
Sequence:	MALSYRVSEL QSTIPEHILQ STFVHVISSN WSGLQTESIP EEMKQIVVEEQ GNKLHW
Characteristics:	Human HTR2B partial ORF (NP_000858, 1 a.a. - 56 a.a.) recombinant protein with GST-tag at N-terminal.
Purification:	in vitro wheat germ expression system

Target Details

Target:	Serotonin Receptor 2B (HTR2B)
Alternative Name:	HTR2B (HTR2B Products)
Background:	Full Gene Name: 5-hydroxytryptamine (serotonin) receptor 2B

Target Details

Synonyms: 5-HT(2B),5-HT2B

Gene ID: 3357

NCBI Accession: [NM_000867](#)

Pathways: [JAK-STAT Signaling](#), [Inositol Metabolic Process](#), [Regulation of G-Protein Coupled Receptor Protein Signaling](#), [Regulation of Carbohydrate Metabolic Process](#)

Application Details

Application Notes: Optimal working dilution should be determined by the investigator.

Comment: Preparation method: in vitro, wheat germ expression system
Product Quality tested by: 12.5% SDS-PAGE Stained with Coomassie Blue.

Restrictions: For Research Use only

Handling

Buffer: 50 mM Tris-HCl, 10 mM reduced Glutathione, pH =8.0 in the elution buffer.

Handling Advice: Aliquot to avoid repeated freezing and thawing.

Storage: -80 °C

Storage Comment: Best use within three months from the date of receipt of this protein.

Images

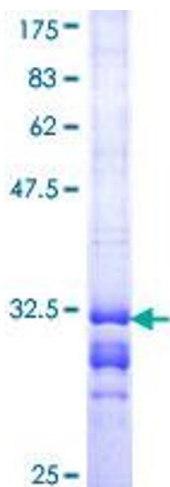


Image 1.