

Datasheet for ABIN1307272 Serotonin Receptor 2B Protein (HTR2B) (AA 199-359) (GST tag)



[Go to Product page](#)

1 Image

Overview

Quantity:	10 µg
Target:	Serotonin Receptor 2B (HTR2B)
Protein Characteristics:	AA 199-359
Origin:	Human
Source:	Wheat germ
Protein Type:	Recombinant
Purification tag / Conjugate:	This Serotonin Receptor 2B protein is labelled with GST tag.
Application:	ELISA, Western Blotting (WB), Affinity Purification (AP), Antibody Array (AA)

Product Details

Purpose:	HTR2B (Human) Recombinant Protein (Q02)
Sequence:	VDNPNNITCV LTKERFGDFM LFGSLAAFFT PLAIMIVTYF LTIHALQKKA YLVKNKPPQR LTWLVSTVF QRDETPCSSP EKVAMLDGSR KDKALPNSGD ETLMRRTSTI GKKSVMQTSN EQRASKVLGI VFFLFLLMWC PFFITNITLV LCDSCNQTTL Q
Characteristics:	Human HTR2B partial ORF (AAH63123.1, 199 a.a. - 359 a.a.) recombinant protein with GST-tag at N-terminal.
Purification:	in vitro wheat germ expression system

Target Details

Target:	Serotonin Receptor 2B (HTR2B)
Alternative Name:	HTR2B (HTR2B Products)

Target Details

Background:	Full Gene Name: 5-hydroxytryptamine (serotonin) receptor 2B Synonyms: 5-HT(2B),5-HT2B
Gene ID:	3357
Pathways:	JAK-STAT Signaling , Inositol Metabolic Process , Regulation of G-Protein Coupled Receptor Protein Signaling , Regulation of Carbohydrate Metabolic Process

Application Details

Application Notes:	Optimal working dilution should be determined by the investigator.
Comment:	Preparation method: in vitro, wheat germ expression system Product Quality tested by: 12.5% SDS-PAGE Stained with Coomassie Blue.
Restrictions:	For Research Use only

Handling

Buffer:	50 mM Tris-HCl, 10 mM reduced Glutathione, pH =8.0 in the elution buffer.
Handling Advice:	Aliquot to avoid repeated freezing and thawing.
Storage:	-80 °C
Storage Comment:	Best use within three months from the date of receipt of this protein.

Images

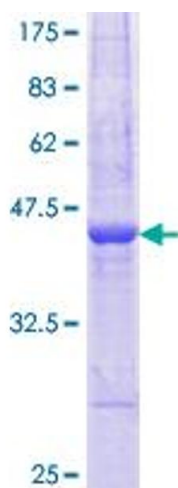


Image 1.