



Datasheet for ABIN1307323
ICA1L Protein (AA 1-482) (GST tag)



[Go to Product page](#)

1 Image

Overview

Quantity:	25 µg
Target:	ICA1L
Protein Characteristics:	AA 1-482
Origin:	Human
Source:	Wheat germ
Protein Type:	Recombinant
Purification tag / Conjugate:	This ICA1L protein is labelled with GST tag.
Application:	ELISA, Western Blotting (WB), Affinity Purification (AP), Antibody Array (AA)

Product Details

Purpose:	ICA1L (Human) Recombinant Protein (P01)
Sequence:	MDSFGQPRPE DNQSVVRRMQ KKYWKTKQVF IKATGKKEDE HLVASDAELD AKLEVFHSVQ ETCTELLKII EKYQLRLNVI SEEENELGLF LKFQAERDAT QAGKMMDATG KALCSSAKQR LALCTPLSRL KQEVATFSQR AVSDTLMTIN RMEQARTEYR GALLWMKDVS QELDPDTLKQ MEKFRKVQMQ VRNSKASFDK LKMDVCQKVD LLGASRCNML SHSLTTYQRT LLGFWKKTAR MMSQIHEACI GFHPYDFVAL KQLQDTPSKI SEDNKDEQIG GFLTEQLNKL VLSDEEASFE SEQANKDHNE KHSQMREFGA PQFSNSENVA KDLPVDSLEG EDFEKEFSFL NNLLSSGSSS TSEFTQECQT AFGSPSASLT SQEPSMGSEP LAHSSRFLPS QLFDLGFHVA GAFNNWVSQE ESELCLSHTD NQPVPSQSPK KLTRSPNNGN QDMSAWFNLF ADLDPLSNPD AIGHSDDELL NA
Characteristics:	Human ICA1L full-length ORF (NP_612477.3, 1 a.a. - 482 a.a.) recombinant protein with GST-tag at N-terminal.

Product Details

Purification: in vitro wheat germ expression system

Target Details

Target: ICA1L

Alternative Name: ICA1L ([ICA1L Products](#))

Background: Full Gene Name: islet cell autoantigen 1,69 kDa-like
Synonyms: ALS2CR14,ALS2CR15,DKFZp434E1919,MGC138440

Gene ID: 130026

NCBI Accession: [NM_138468](#)

Application Details

Application Notes: Optimal working dilution should be determined by the investigator.

Comment: Preparation method: in vitro, wheat germ expression system
Product Quality tested by: 12.5% SDS-PAGE Stained with Coomassie Blue.

Restrictions: For Research Use only

Handling

Buffer: 50 mM Tris-HCl, 10 mM reduced Glutathione, pH =8.0 in the elution buffer.

Handling Advice: Aliquot to avoid repeated freezing and thawing.

Storage: -80 °C

Storage Comment: Best use within three months from the date of receipt of this protein.

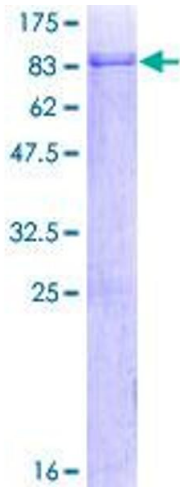


Image 1.