

Datasheet for ABIN1307332
ICK Protein (AA 1-292) (GST tag)



[Go to Product page](#)

1 Image

Overview

Quantity:	10 µg
Target:	ICK
Protein Characteristics:	AA 1-292
Origin:	Human
Source:	Wheat germ
Protein Type:	Recombinant
Purification tag / Conjugate:	This ICK protein is labelled with GST tag.
Application:	Western Blotting (WB), ELISA, Affinity Purification (AP), Antibody Array (AA)

Product Details

Purpose:	ICK (Human) Recombinant Protein (P01)
Sequence:	MNRYTTIRQL GDGTYGSVLL GRSIESGELI AIKKMKRKFY SWEECMNLRE VKSLKCLNHA NVVKLKEVIR ENDHLYFIFE YMKENLYQLI KERNKLPES AIRNIMYQIL QGLAFIHKHG FFHRDLKPEN LLCMGPPELVK IADFGLAREI RSKPPYTDYV STRWYRAPEV LLRSTNYSSP IDVWAVGCIM AEVYTLRPLF PGASEIDTIF KICQVLGTPK KTDWPEGYQL SSAMNFRWPQ CVPNNLKTLL PNASSEAVQL LRDMLQWDPK KRPTASQVFF HFLVITFISN SE
Characteristics:	Human ICK full-length ORF (AAH35807, 1 a.a. - 292 a.a.) recombinant protein with GST-tag at N-terminal.
Purification:	in vitro wheat germ expression system

Target Details

Target:	ICK
Alternative Name:	ICK (ICK Products)
Background:	Full Gene Name: intestinal cell (MAK-like) kinase Synonyms: KIAA0936,LCK2,MGC46090,MRK
Gene ID:	22858

Application Details

Application Notes:	Optimal working dilution should be determined by the investigator.
Comment:	Preparation method: in vitro, wheat germ expression system Product Quality tested by: 12.5% SDS-PAGE Stained with Coomassie Blue.
Restrictions:	For Research Use only

Handling

Buffer:	50 mM Tris-HCl, 10 mM reduced Glutathione, pH =8.0 in the elution buffer.
Handling Advice:	Aliquot to avoid repeated freezing and thawing.
Storage:	-80 °C
Storage Comment:	Best use within three months from the date of receipt of this protein.

Images

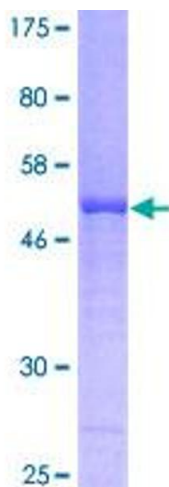


Image 1.