



[Go to Product page](#)

Datasheet for ABIN1307393

IER2 Protein (AA 1-223) (GST tag)

1 Image

Overview

Quantity:	10 µg
Target:	IER2
Protein Characteristics:	AA 1-223
Origin:	Human
Source:	Wheat germ
Protein Type:	Recombinant
Purification tag / Conjugate:	This IER2 protein is labelled with GST tag.
Application:	Western Blotting (WB), ELISA, Affinity Purification (AP), Antibody Array (AA)

Product Details

Purpose:	IER2 (Human) Recombinant Protein (P01)
Sequence:	MEVQKEAQR I MTLVWVKMYH SRMQRGGLRL HRSLQLSLVM RSARELYLSA KVEALEPEVS LPAALPSDPR LHPPREAEST AETATPDGEH PFPEPMDTQE APTAEETSAC CAPRPAKVSR KRRSSSLSDG GDAGLVPSKK ARLEEKEEEE GASSEVADRL QPPPAQAE GA FPNLARVLQR RFSGLLNCSP AAPPTAPPAC EAKPACRPAD SMLNVLVRAV VAF
Characteristics:	Human IER2 full-length ORF (AAH03625, 1 a.a. - 223 a.a.) recombinant protein with GST-tag at N-terminal.
Purification:	in vitro wheat germ expression system

Target Details

Target:	IER2
---------	------

Target Details

Alternative Name:	IER2 (IER2 Products)
Background:	Full Gene Name: immediate early response 2 Synonyms: ETR101,MGC111472,MGC15265
Gene ID:	9592

Application Details

Application Notes:	Optimal working dilution should be determined by the investigator.
Comment:	Preparation method: in vitro, wheat germ expression system Product Quality tested by: 12.5% SDS-PAGE Stained with Coomassie Blue.
Restrictions:	For Research Use only

Handling

Buffer:	50 mM Tris-HCl, 10 mM reduced Glutathione, pH =8.0 in the elution buffer.
Handling Advice:	Aliquot to avoid repeated freezing and thawing.
Storage:	-80 °C
Storage Comment:	Best use within three months from the date of receipt of this protein.

Images

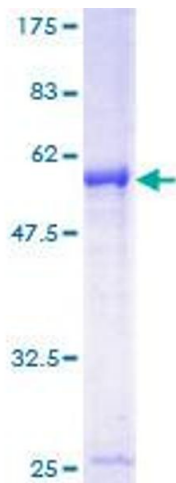


Image 1.