

Datasheet for ABIN1307399

IER5 Protein (AA 1-56) (GST tag)[Go to Product page](#)**1** Image

Overview

Quantity:	10 µg
Target:	IER5
Protein Characteristics:	AA 1-56
Origin:	Human
Source:	Wheat germ
Protein Type:	Recombinant
Purification tag / Conjugate:	This IER5 protein is labelled with GST tag.
Application:	ELISA, Western Blotting (WB), Affinity Purification (AP), Antibody Array (AA)

Product Details

Purpose:	IER5 (Human) Recombinant Protein (Q01)
Sequence:	MEFKLEAHRI VSISLGKIYN SRVQRGGIKL HKNLLVSLVL RSARQVYLSD PCPGLY
Characteristics:	Human IER5 partial ORF (NP_057629, 1 a.a. - 56 a.a.) recombinant protein with GST-tag at N-terminal.
Purification:	in vitro wheat germ expression system

Target Details

Target:	IER5
Alternative Name:	IER5 (IER5 Products)
Background:	Full Gene Name: immediate early response 5

Target Details

	Synonyms: MGC102760,SBBI48
Gene ID:	51278
NCBI Accession:	NM_016545

Application Details

Application Notes:	Optimal working dilution should be determined by the investigator.
Comment:	Preparation method: in vitro, wheat germ expression system Product Quality tested by: 12.5% SDS-PAGE Stained with Coomassie Blue.
Restrictions:	For Research Use only

Handling

Buffer:	50 mM Tris-HCl, 10 mM reduced Glutathione, pH =8.0 in the elution buffer.
Handling Advice:	Aliquot to avoid repeated freezing and thawing.
Storage:	-80 °C
Storage Comment:	Best use within three months from the date of receipt of this protein.

Images

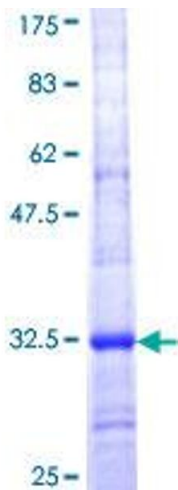


Image 1.