

Datasheet for ABIN1307403

IFI16 Protein (AA 1-729) (GST tag)



[Go to Product page](#)

1 Image

Overview

Quantity:	25 µg
Target:	IFI16
Protein Characteristics:	AA 1-729
Origin:	Human
Source:	Wheat germ
Protein Type:	Recombinant
Purification tag / Conjugate:	This IFI16 protein is labelled with GST tag.
Application:	Western Blotting (WB), ELISA, Affinity Purification (AP), Antibody Array (AA)

Product Details

Purpose:	IFI16 (Human) Recombinant Protein (P01)
Sequence:	MGKKYKNIVL LKGLEVINDY HFRMVKSLLS NDLKLNLMR EEYDKIQIAD LMEEKFRGDA GLGKLIKIFE DIPTLEDLAE TLKKEKLVK GPALSRKRKK EVDATSPAPS TSSTVKTEGA EATPGAQKRK KSTKEKAGPK GSKVSEEQTQ PPSAGAGMS TAMGRSPSPK TSLSAPPNTS STENPKTVAK CQVTPRRNVL QKRPVIVKVL STTKPFYET PEMEKKIMFH ATVATQTQFF HVKVLNTSLK EKFNKKIII ISDYLEYDSL LEVNEESTVS EAGPNQTFEV PNKIINRAKE TLKIDILHKQ ASGNIVYGVF MLHKKTVNQK TTIYEIQDDR GKMDVVGTTGQ CHNIPCEEGD KLQLFCFRLR KKNQMSKLIS EMHSFIQIKK KTNPRNNDPK SMKLPQEQSQ LPNPSEASTT FPESHLRTPQ MPPTTPSSSF FTKKSEDTIS KMNDFMRMQI LKEGSHFPGP FMTSIGPAES HPHTPQMPPS TPSSSFLTTL KPRLKTEPEE VSIEDSAQSD LKEVMVLNAT ESFVYEPKEQ KKMFHATVAT ENEVFRVKVF NIDLKEKFTP KKIIAIANYV CRNGFLEVYP FTLVADVAD RNMEIPKGLI RSASVTPKIN QLCSQTKGSF VNGVFEVHKK NVRGEFTYYE IQDNTGKMEV

Product Details

VVHGRLTTIN CEEGDKCLKLT CFELAPKSGN TGELRSVIHS HIKVIKTRKN KKDILNPDSS
METSPDFFF

Characteristics: Human IFI16 full-length ORF (AAH17059.1, 1 a.a. - 729 a.a.) recombinant protein with GST-tag at N-terminal.

Purification: in vitro wheat germ expression system

Target Details

Target: IFI16

Alternative Name: IFI16 ([IFI16 Products](#))

Background: Full Gene Name: interferon, gamma-inducible protein 16
Synonyms: IFNGIP1,MGC9466,PYHIN2

Gene ID: 3428

Pathways: [Activation of Innate immune Response](#), [Positive Regulation of Endopeptidase Activity](#),
[Autophagy](#), [Inflammasome](#)

Application Details

Application Notes: Optimal working dilution should be determined by the investigator.

Comment: Preparation method: in vitro, wheat germ expression system
Product Quality tested by: 12.5% SDS-PAGE Stained with Coomassie Blue.

Restrictions: For Research Use only

Handling

Buffer: 50 mM Tris-HCl, 10 mM reduced Glutathione, pH =8.0 in the elution buffer.

Handling Advice: Aliquot to avoid repeated freezing and thawing.

Storage: -80 °C

Storage Comment: Best use within three months from the date of receipt of this protein.

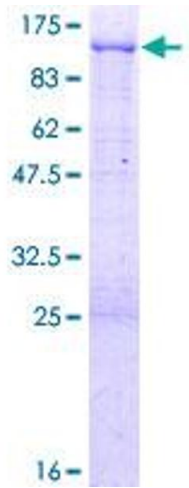


Image 1.