



[Go to Product page](#)

Datasheet for ABIN1307439

IFITM2 Protein (AA 1-132) (GST tag)

1 Image

Overview

Quantity:	10 µg
Target:	IFITM2
Protein Characteristics:	AA 1-132
Origin:	Human
Source:	Wheat germ
Protein Type:	Recombinant
Purification tag / Conjugate:	This IFITM2 protein is labelled with GST tag.
Application:	Western Blotting (WB), ELISA, Affinity Purification (AP), Antibody Array (AA)

Product Details

Purpose:	IFITM2 (Human) Recombinant Protein (P01)
Sequence:	MNHIVQTFSP VNSGQPPNYE MLKEEQEVAM LGAPHNPAPP TSTVIHIRSE TSVDPDHVWWS LFNTLFMNTC CLGFIAFAYS VKSRDRKMVG DVTGAQAYAS TAKCLNIWAL ILGIFMTILL VIIPVLVVQA QR
Characteristics:	Human IFITM2 full-length ORF (AAH09696, 1 a.a. - 132 a.a.) recombinant protein with GST-tag at N-terminal.
Purification:	in vitro wheat germ expression system

Target Details

Target:	IFITM2
Alternative Name:	IFITM2 (IFITM2 Products)

Target Details

Background:	Full Gene Name: interferon induced transmembrane protein 2 (1-8D) Synonyms: 1-8D
Gene ID:	10581

Application Details

Application Notes:	Optimal working dilution should be determined by the investigator.
Comment:	Preparation method: in vitro, wheat germ expression system Product Quality tested by: 12.5% SDS-PAGE Stained with Coomassie Blue.
Restrictions:	For Research Use only

Handling

Buffer:	50 mM Tris-HCl, 10 mM reduced Glutathione, pH =8.0 in the elution buffer.
Handling Advice:	Aliquot to avoid repeated freezing and thawing.
Storage:	-80 °C
Storage Comment:	Best use within three months from the date of receipt of this protein.

Images

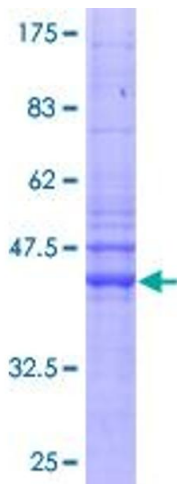


Image 1.