



[Go to Product page](#)

Datasheet for ABIN1307443

## IFITM2 Protein (AA 1-59) (GST tag)

### 1 Image

#### Overview

Quantity:	10 µg
Target:	IFITM2
Protein Characteristics:	AA 1-59
Origin:	Human
Source:	Wheat germ
Protein Type:	Recombinant
Purification tag / Conjugate:	This IFITM2 protein is labelled with GST tag.
Application:	Western Blotting (WB), ELISA, Affinity Purification (AP), Antibody Array (AA)

#### Product Details

Purpose:	IFITM2 (Human) Recombinant Protein (Q01)
Sequence:	MNHIVQTFSP VNSGQPPNYE MLKEEQEVAM LGAPHNPAPP TSTVIHIRSE TSVPDHVVW
Characteristics:	Human IFITM2 partial ORF ( NP_006426.1, 1 a.a. - 59 a.a.) recombinant protein with GST-tag at N-terminal.
Purification:	in vitro wheat germ expression system

#### Target Details

Target:	IFITM2
Alternative Name:	IFITM2 ( <a href="#">IFITM2 Products</a> )
Background:	Full Gene Name: interferon induced transmembrane protein 2 (1-8D)

## Target Details

Synonyms: 1-8D

Gene ID: 10581

NCBI Accession: [NM\\_006435](#)

## Application Details

Application Notes: Optimal working dilution should be determined by the investigator.

Comment: Preparation method: in vitro, wheat germ expression system  
Product Quality tested by: 12.5% SDS-PAGE Stained with Coomassie Blue.

Restrictions: For Research Use only

## Handling

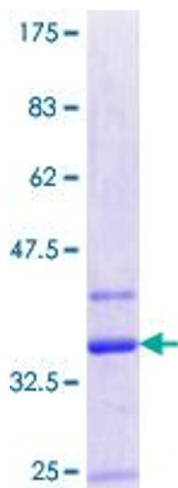
Buffer: 50 mM Tris-HCl, 10 mM reduced Glutathione, pH =8.0 in the elution buffer.

Handling Advice: Aliquot to avoid repeated freezing and thawing.

Storage: -80 °C

Storage Comment: Best use within three months from the date of receipt of this protein.

## Images



**Image 1.**