

Datasheet for ABIN1307492  
**IFNB1 Protein (AA 1-187) (GST tag)**



[Go to Product page](#)

1 Image

Overview

Quantity:	25 µg
Target:	IFNB1
Protein Characteristics:	AA 1-187
Origin:	Human
Source:	Wheat germ
Protein Type:	Recombinant
Purification tag / Conjugate:	This IFNB1 protein is labelled with GST tag.
Application:	Western Blotting (WB), ELISA, Affinity Purification (AP), Antibody Array (AA)

Product Details

Purpose:	IFNB1 (Human) Recombinant Protein (P01)
Sequence:	MTNKLLQIA LLLCFSTTAL SMSYNLLGFL QRSSNFQCQK LLWQLNGRLE YCLKDRMNFD IPEEIKQLQQ FQKEDAALTI YEMLQNIFAI FRQDSSSTGW NETIVENLLA NVYHQINHLK TVLEEKLEKE DFTRGKLMSS LHLKRYYGRI LHYLKAKEYS HCAWTIVRVE ILRNFYFINR LTGYLRN
Characteristics:	Human IFNB1 full-length ORF ( NP_002167.1, 1 a.a. - 187 a.a.) recombinant protein with GST-tag at N-terminal.
Purification:	in vitro wheat germ expression system

Target Details

Target:	IFNB1
Alternative Name:	IFNB1 ( <a href="#">IFNB1 Products</a> )

## Target Details

Background: Full Gene Name: interferon, beta 1, fibroblast  
Synonyms: IFB,IFF,IFNB,MGC96956

Gene ID: 3456

NCBI Accession: [NM\\_002176](#)

Pathways: [JAK-STAT Signaling](#), [TCR Signaling](#), [TLR Signaling](#), [Regulation of Leukocyte Mediated Immunity](#), [Production of Molecular Mediator of Immune Response](#), [Positive Regulation of Endopeptidase Activity](#), [Hepatitis C](#), [Autophagy](#), [Inflammasome](#)

## Application Details

Application Notes: Optimal working dilution should be determined by the investigator.

Comment: Preparation method: in vitro, wheat germ expression system  
Product Quality tested by: 12.5% SDS-PAGE Stained with Coomassie Blue.

Restrictions: For Research Use only

## Handling

Buffer: 50 mM Tris-HCl, 10 mM reduced Glutathione, pH =8.0 in the elution buffer.

Handling Advice: Aliquot to avoid repeated freezing and thawing.

Storage: -80 °C

Storage Comment: Best use within three months from the date of receipt of this protein.

## Images

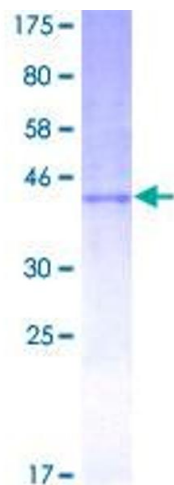


Image 1.