

Datasheet for ABIN1307494
IFNE Protein (AA 1-208) (GST tag)



[Go to Product page](#)

1 Image

Overview

Quantity:	10 µg
Target:	IFNE
Protein Characteristics:	AA 1-208
Origin:	Human
Source:	Wheat germ
Protein Type:	Recombinant
Purification tag / Conjugate:	This IFNE protein is labelled with GST tag.
Application:	Western Blotting (WB), ELISA, Affinity Purification (AP), Antibody Array (AA)

Product Details

Purpose:	IFNE1 (Human) Recombinant Protein (P01)
Sequence:	MIKHFFGTV LVLLASTTIF SLDLKLIFQ QRQVNQESLK LLNKLQTL SI QQCLPHRKNF LLPQKSLSPQ QYQKGHTLAI LHEMLQQIFS LFRANISLDG WEENHTEKFL IQLHQQLEYL EALMGLEAEK LSGTLGSDNL RLQVKMYFRR IHDYLENQDY STCAWAIVQV EISRCLFFVF SLTEKLSKQG RPLNDMKQEL TTEFRSPR
Characteristics:	Human IFNE1 full-length ORF (NP_795372.1, 1 a.a. - 208 a.a.) recombinant protein with GST-tag at N-terminal.
Purification:	in vitro wheat germ expression system

Target Details

Target:	IFNE
---------	------

Target Details

Alternative Name:	IFNE (IFNE Products)
Background:	Full Gene Name: interferon, epsilon Synonyms: IFN-E,IFNE1,IFNT1,MGC119018,MGC119020,PRO655
Gene ID:	338376
NCBI Accession:	NM_176891
Pathways:	Hormone Activity

Application Details

Application Notes:	Optimal working dilution should be determined by the investigator.
Comment:	Preparation method: in vitro, wheat germ expression system Product Quality tested by: 12.5% SDS-PAGE Stained with Coomassie Blue.
Restrictions:	For Research Use only

Handling

Buffer:	50 mM Tris-HCl, 10 mM reduced Glutathione, pH =8.0 in the elution buffer.
Handling Advice:	Aliquot to avoid repeated freezing and thawing.
Storage:	-80 °C
Storage Comment:	Best use within three months from the date of receipt of this protein.

Images

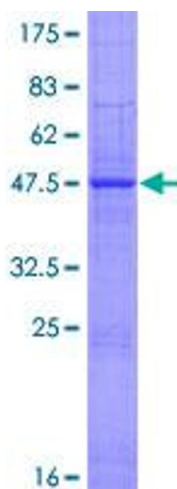


Image 1.