



[Go to Product page](#)

Datasheet for ABIN1307501

## IFNGR2 Protein (AA 1-337) (GST tag)

### 1 Image

#### Overview

Quantity:	25 µg
Target:	IFNGR2
Protein Characteristics:	AA 1-337
Origin:	Human
Source:	Wheat germ
Protein Type:	Recombinant
Purification tag / Conjugate:	This IFNGR2 protein is labelled with GST tag.
Application:	ELISA, Western Blotting (WB), Affinity Purification (AP), Antibody Array (AA)

#### Product Details

Purpose:	IFNGR2 (Human) Recombinant Protein (P01)
Sequence:	MRPTLLWSLL LLLGVFAAAA AAPPDPLSQL PAPQHPKIRL YNAEQVLSWE PVALSNSTRP VVYQVQFKYT DSKWFTADIM SIGVNCTQIT ATECDFTAAS PSAGFPMDFN VTLRLRAELG ALHSAWVTMP WFQHYRNVTV GPPENIEVTP GEGSLIIRFS SPFDIADTST AFFCYVHYW EKGGIQQVKG PFRSNSISLD NLKPSRVYCL QVQAQLLWNK SNIFRVGHLS NISCYETMAD ASTELQQVIL ISVGTFSLLS VLAGACFFLV LKYRGLIKYW FHTPPSIPLQ IEEYLKDPTQ PILEALDKDS SPKDDVWDSV SIISFPEKEQ EDVLQTL
Characteristics:	Human IFNGR2 full-length ORF ( AAH03624, 1 a.a. - 337 a.a.) recombinant protein with GST-tag at N-terminal.
Purification:	in vitro wheat germ expression system

## Target Details

Target:	IFNGR2
Alternative Name:	IFNGR2 ( <a href="#">IFNGR2 Products</a> )
Background:	Full Gene Name: interferon gamma receptor 2 (interferon gamma transducer 1) Synonyms: AF-1,IFGR2,IFNGT1
Gene ID:	3460

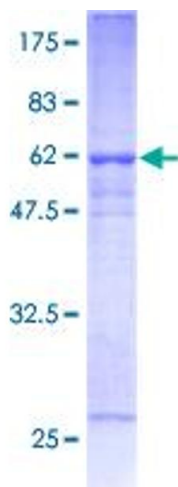
## Application Details

Application Notes:	Optimal working dilution should be determined by the investigator.
Comment:	Preparation method: in vitro, wheat germ expression system Product Quality tested by: 12.5% SDS-PAGE Stained with Coomassie Blue.
Restrictions:	For Research Use only

## Handling

Buffer:	50 mM Tris-HCl, 10 mM reduced Glutathione, pH =8.0 in the elution buffer.
Handling Advice:	Aliquot to avoid repeated freezing and thawing.
Storage:	-80 °C
Storage Comment:	Best use within three months from the date of receipt of this protein.

## Images



**Image 1.**