



[Go to Product page](#)

Datasheet for ABIN1307522

IFT52 Protein (AA 1-437) (GST tag)

1 Image

Overview

Quantity:	10 µg
Target:	IFT52
Protein Characteristics:	AA 1-437
Origin:	Human
Source:	Wheat germ
Protein Type:	Recombinant
Purification tag / Conjugate:	This IFT52 protein is labelled with GST tag.
Application:	ELISA, Western Blotting (WB), Affinity Purification (AP), Antibody Array (AA)

Product Details

Purpose:	IFT52 (Human) Recombinant Protein (P01)
Sequence:	MEKELRSTIL FNAYKKEIFT TNNGYKSMQK KLRSNWKIQS LKDEITSEKL NGVKLWITAG PREKFTAAEF EILKKYLDTG GDVFMVLGEG GESRFDTNIN FLLEEGIMV NNDVVRNVY HKYFHPKEAL VSSGVLNREI SRAAGKAVPG IIDEESGNN AQALTFVYPF GATLSVMKPA VAVLSTGSVC FPLNRPILAF YHSKNQGGKL AVLGSCHEMFS DQYLDKEENS KIMDVVFQWL TTGDIHLNQi DAEDPEISDY MMLPYTATLS KRNRECLQES DEIPRDFTTL FDLSIFQLDT TSFHSVIEAH EQLNVKHEPL QLIQPQFETP LPTLQPAVFP PSFRELPPPP LELFDLDET SSEKARLAQI TNKCTEEDLE FYVRKCGDIL GVTSKLPKDQ QDAKHILEHV FFQVVEFKKL NQEHDIDTSE TAFQNNF
Characteristics:	Human IFT52 full-length ORF (NP_057088.2, 1 a.a. - 437 a.a.) recombinant protein with GST-tag at N-terminal.

Product Details

Purification: in vitro wheat germ expression system

Target Details

Target: IFT52

Alternative Name: IFT52 ([IFT52 Products](#))

Background: Full Gene Name: intraflagellar transport 52 homolog (Chlamydomonas)
Synonyms: C20orf9,CGI-53,NGD5,dJ1028D15.1

Gene ID: 51098

NCBI Accession: [NM_016004](#)

Application Details

Application Notes: Optimal working dilution should be determined by the investigator.

Comment: Preparation method: in vitro, wheat germ expression system
Product Quality tested by: 12.5% SDS-PAGE Stained with Coomassie Blue.

Restrictions: For Research Use only

Handling

Buffer: 50 mM Tris-HCl, 10 mM reduced Glutathione, pH =8.0 in the elution buffer.

Handling Advice: Aliquot to avoid repeated freezing and thawing.

Storage: -80 °C

Storage Comment: Best use within three months from the date of receipt of this protein.

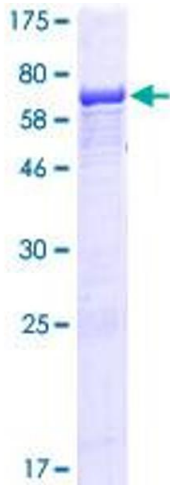


Image 1.