



[Go to Product page](#)

Datasheet for ABIN1307540

IGDCC4 Protein (AA 1152-1250) (GST tag)

1 Image

Overview

Quantity:	10 µg
Target:	IGDCC4
Protein Characteristics:	AA 1152-1250
Origin:	Human
Source:	Wheat germ
Protein Type:	Recombinant
Purification tag / Conjugate:	This IGDCC4 protein is labelled with GST tag.
Application:	ELISA, Western Blotting (WB), Affinity Purification (AP), Antibody Array (AA)

Product Details

Purpose:	NOPE (Human) Recombinant Protein (Q01)
Sequence:	DLEPEDPLPP EAPDLISGVG DPGQGAAWLD RELGGCELAA PGPDRLTCLP EAASASCSTYP DLQPGEVLEE TPGDSCQLKS PCPLGASPL PRSPVSSSA
Characteristics:	Human NOPE partial ORF (NP_066013, 1152 a.a. - 1250 a.a.) recombinant protein with GST-tag at N-terminal.
Purification:	in vitro wheat germ expression system

Target Details

Target:	IGDCC4
Alternative Name:	IGDCC4 (IGDCC4 Products)

Target Details

Background:	Full Gene Name: immunoglobulin superfamily, DCC subclass, member 4 Synonyms: DDM36,FLJ42051,KIAA1628,NOPE
Gene ID:	57722
NCBI Accession:	NM_020962

Application Details

Application Notes:	Optimal working dilution should be determined by the investigator.
Comment:	Preparation method: in vitro, wheat germ expression system Product Quality tested by: 12.5% SDS-PAGE Stained with Coomassie Blue.
Restrictions:	For Research Use only

Handling

Buffer:	50 mM Tris-HCl, 10 mM reduced Glutathione, pH =8.0 in the elution buffer.
Handling Advice:	Aliquot to avoid repeated freezing and thawing.
Storage:	-80 °C
Storage Comment:	Best use within three months from the date of receipt of this protein.

Images

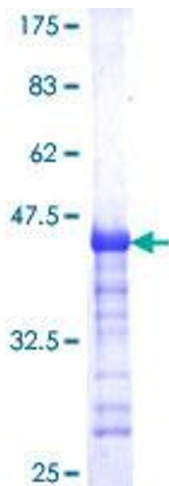


Image 1.