



[Go to Product page](#)

Datasheet for ABIN1307542

IGF1 Protein (AA 1-153) (GST tag)

1 Image

Overview

Quantity:	25 µg
Target:	IGF1
Protein Characteristics:	AA 1-153
Origin:	Human
Source:	Wheat germ
Protein Type:	Recombinant
Purification tag / Conjugate:	This IGF1 protein is labelled with GST tag.
Application:	Western Blotting (WB), ELISA, Antibody Array (AA), Affinity Purification (AP)

Product Details

Purpose:	IGF1 (Human) Recombinant Protein (P02)
Sequence:	MGKISSLPTQ LFKCCFCDFL KVKMHTMSSS HLFYLALCLL TFTSSATAGP ETLCGAELVD ALQFVCGDRG FYFNKPTGYG SSSRRAPQTG IVDECCFRSC DLRRLEMYCA PLKPAKSARS VRAQRHTDMP KTQKEVHLKN ASRGSAGNKN YRM
Characteristics:	Human IGF1 full-length ORF (NP_000609.1, 1 a.a. - 153 a.a.) recombinant protein with GST-tag at N-terminal.
Purification:	in vitro wheat germ expression system

Target Details

Target:	IGF1
Alternative Name:	IGF1 (IGF1 Products)

Target Details

Background:	Full Gene Name: insulin-like growth factor 1 (somatomedin C) Synonyms: IGFI
Gene ID:	3479
Pathways:	RTK Signaling , Intracellular Steroid Hormone Receptor Signaling Pathway , Peptide Hormone Metabolism , Hormone Activity , Regulation of Intracellular Steroid Hormone Receptor Signaling , Regulation of Hormone Metabolic Process , Regulation of Hormone Biosynthetic Process , Stem Cell Maintenance , Glycosaminoglycan Metabolic Process , Regulation of Carbohydrate Metabolic Process , Autophagy , Smooth Muscle Cell Migration , Activated T Cell Proliferation , Positive Regulation of fat Cell Differentiation

Application Details

Application Notes:	Optimal working dilution should be determined by the investigator.
Comment:	Preparation method: in vitro, wheat germ expression system Product Quality tested by: 12.5% SDS-PAGE Stained with Coomassie Blue.
Restrictions:	For Research Use only

Handling

Buffer:	50 mM Tris-HCl, 10 mM reduced Glutathione, pH =8.0 in the elution buffer.
Handling Advice:	Aliquot to avoid repeated freezing and thawing.
Storage:	-80 °C
Storage Comment:	Best use within three months from the date of receipt of this protein.

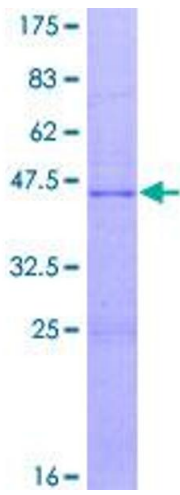


Image 1.