



[Go to Product page](#)

Datasheet for ABIN1307550

IGF2 Protein (AA 25-114) (GST tag)

1 Image

Overview

| | |
|-------------------------------|---|
| Quantity: | 10 µg |
| Target: | IGF2 |
| Protein Characteristics: | AA 25-114 |
| Origin: | Human |
| Source: | Wheat germ |
| Protein Type: | Recombinant |
| Purification tag / Conjugate: | This IGF2 protein is labelled with GST tag. |
| Application: | Western Blotting (WB), ELISA, Antibody Array (AA), Affinity Purification (AP) |

Product Details

| | |
|------------------|---|
| Purpose: | IGF2 (Human) Recombinant Protein (Q01) |
| Sequence: | AYRPSETLCG GELVDTLQFV CGDRGFYFSR PASRVSRRSR GIVEECCFRS CDLALLETYC ATPAKSERDV STPPTVLPDN FPRYPVGKFF |
| Characteristics: | Human IGF2 partial ORF (NP_000603, 25 a.a. - 114 a.a.) recombinant protein with GST-tag at N-terminal. |
| Purification: | in vitro wheat germ expression system |

Target Details

| | |
|-------------------|--|
| Target: | IGF2 |
| Alternative Name: | IGF2 (IGF2 Products) |

Target Details

Background: Full Gene Name: insulin-like growth factor 2 (somatomedin A)
Synonyms: C11orf43,FLJ22066,FLJ44734,INSIGF,pp9974

Gene ID: 3481

NCBI Accession: [NM_000612](#)

Pathways: [Hormone Activity](#), [Regulation of Hormone Metabolic Process](#), [Regulation of Hormone Biosynthetic Process](#), [Regulation of Carbohydrate Metabolic Process](#), [Activated T Cell Proliferation](#)

Application Details

Application Notes: Optimal working dilution should be determined by the investigator.

Comment: Preparation method: in vitro, wheat germ expression system
Product Quality tested by: 12.5% SDS-PAGE Stained with Coomassie Blue.

Restrictions: For Research Use only

Handling

Buffer: 50 mM Tris-HCl, 10 mM reduced Glutathione, pH =8.0 in the elution buffer.

Handling Advice: Aliquot to avoid repeated freezing and thawing.

Storage: -80 °C

Storage Comment: Best use within three months from the date of receipt of this protein.

Images

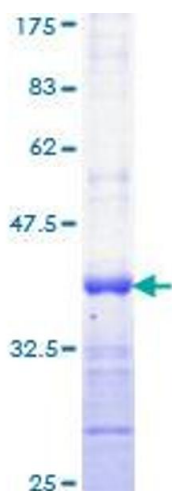


Image 1.