

Datasheet for ABIN1307555
IGF2BP2 Protein (AA 1-598) (GST tag)



[Go to Product page](#)

1 Image

Overview

Quantity:	25 µg
Target:	IGF2BP2
Protein Characteristics:	AA 1-598
Origin:	Human
Source:	Wheat germ
Protein Type:	Recombinant
Purification tag / Conjugate:	This IGF2BP2 protein is labelled with GST tag.
Application:	Western Blotting (WB), ELISA, Affinity Purification (AP), Antibody Array (AA)

Product Details

Purpose:	IGF2BP2 (Human) Recombinant Protein (P02)
Sequence:	MNKLYIGNLS PAVTADDLRQ LFGDRKLPLA GQVLLKSGYA FVDYPDQNWA IRAIETLSGK VELHGKIMEV DYSVSKKLRs RKIQIRNIPP HLQWEVLDGL LAQYGTVENV EQVNTDTETA VVNVTYATRE EAKIAMEKLS GHQFENYSFK ISYIPDEEVS SPSPQRAQR GDHSSREQGH APGGTSQARQ IDFPLRILVP TQFVGAIIGK EGLTIKNITK QTQSRVDIHR KENSGAAEKP VTIHATPEGT SEACRMILEI MQKEAETKL AEEIPLKILA HNGLVGRLIG KEGRNKKIE HETGTKITIS SLQDLSIYNP ERTITVKGTV EACASAEIEI MKKLREAFEN DMLAVNQQAN LIPGLNLSAL GIFSTGLSVL SPPAGPRGAP PAAPYHPFTT HSGYFSSLYP HHQFGPFPHH HSYPEQEIVN LFIPTQAVGA IIGKKGAHIK QLARFAGASI KIAPAEGPDV SERMVIITGP PEAQFKAQGR IFGKLKEENF FNPKEEVKLE AHIRVPSSTA GRVIGKGGKT VNELQNL TSA EVIVPRDQTP DENEVIVRI IGHFFASQTA QRKIREIVQQ VKQQEQKYPQ GVASQRSK
Characteristics:	Human IGF2BP2 full-length ORF (AAH21290.1, 1 a.a. - 598 a.a.) recombinant protein with GST-

Product Details

tag at N-terminal.

Purification: in vitro wheat germ expression system

Target Details

Target: IGF2BP2

Alternative Name: IGF2BP2 ([IGF2BP2 Products](#))

Background: Full Gene Name: insulin-like growth factor 2 mRNA binding protein 2
Synonyms: IMP-2,IMP2,VICKZ2,p62

Gene ID: 10644

Application Details

Application Notes: Optimal working dilution should be determined by the investigator.

Comment: Preparation method: in vitro, wheat germ expression system
Product Quality tested by: 12.5% SDS-PAGE Stained with Coomassie Blue.

Restrictions: For Research Use only

Handling

Buffer: 50 mM Tris-HCl, 10 mM reduced Glutathione, pH =8.0 in the elution buffer.

Handling Advice: Aliquot to avoid repeated freezing and thawing.

Storage: -80 °C

Storage Comment: Best use within three months from the date of receipt of this protein.

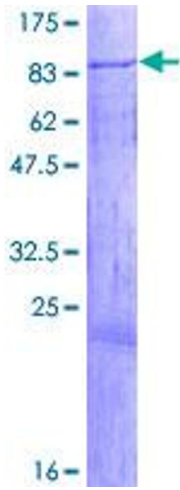


Image 1.