

Datasheet for ABIN1307556
IGF2BP2 Protein (AA 65-169) (GST tag)



[Go to Product page](#)

1 Image

Overview

Quantity:	10 µg
Target:	IGF2BP2
Protein Characteristics:	AA 65-169
Origin:	Human
Source:	Wheat germ
Protein Type:	Recombinant
Purification tag / Conjugate:	This IGF2BP2 protein is labelled with GST tag.
Application:	Western Blotting (WB), ELISA, Affinity Purification (AP), Antibody Array (AA)

Product Details

Purpose:	IMP-2 (Human) Recombinant Protein (Q01)
Sequence:	HGKIMEVDYS VSKKLRSKI QIRNIPPHLQ WEVLDGLLAQ YGTVENVEQV NTDTETAVVN VTYATREEAK IAMEKLSGHQ FENYSFKISY IPDEEVSSPS PPQRA
Characteristics:	Human IMP-2 partial ORF (NP_006539, 65 a.a. - 169 a.a.) recombinant protein with GST-tag at N-terminal.
Purification:	in vitro wheat germ expression system

Target Details

Target:	IGF2BP2
Alternative Name:	IGF2BP2 (IGF2BP2 Products)

Target Details

Background:	Full Gene Name: insulin-like growth factor 2 mRNA binding protein 2 Synonyms: IMP-2,IMP2,VICKZ2,p62
Gene ID:	10644
NCBI Accession:	NM_006548

Application Details

Application Notes:	Optimal working dilution should be determined by the investigator.
Comment:	Preparation method: in vitro, wheat germ expression system Product Quality tested by: 12.5% SDS-PAGE Stained with Coomassie Blue.
Restrictions:	For Research Use only

Handling

Buffer:	50 mM Tris-HCl, 10 mM reduced Glutathione, pH =8.0 in the elution buffer.
Handling Advice:	Aliquot to avoid repeated freezing and thawing.
Storage:	-80 °C
Storage Comment:	Best use within three months from the date of receipt of this protein.

Images

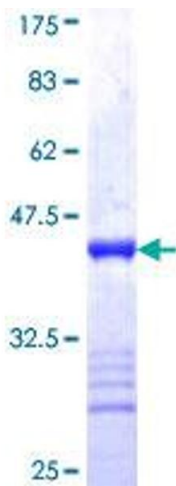


Image 1.