



[Go to Product page](#)

Datasheet for ABIN1307564

## IGFBPI Protein (AA 160-259) (GST tag)

### 1 Image

#### Overview

Quantity:	10 µg
Target:	IGFBPI
Protein Characteristics:	AA 160-259
Origin:	Human
Source:	Wheat germ
Protein Type:	Recombinant
Purification tag / Conjugate:	This IGFBPI protein is labelled with GST tag.
Application:	Western Blotting (WB), ELISA, Affinity Purification (AP), Antibody Array (AA)

#### Product Details

Purpose:	IGFBP1 (Human) Recombinant Protein (Q01)
Sequence:	GSKALHVTNI KKWKEPCRIE LYRVVESLAK AQETSGEEIS KFYLPNCNKN GFYHSRQCET SMDGEAGLCW CVYPWNGKRI PGSPEIRGDP NCQIYFNVQN
Characteristics:	Human IGFBP1 partial ORF ( NP_000587, 160 a.a. - 259 a.a.) recombinant protein with GST-tag at N-terminal.
Purification:	in vitro wheat germ expression system

#### Target Details

Target:	IGFBPI
Alternative Name:	IGFBP1 ( <a href="#">IGFBPI Products</a> )

## Target Details

Background:	Full Gene Name: insulin-like growth factor binding protein 1 Synonyms: AFBP,IBP1,IGF-BP25,PP12,hIGFBP-1
Gene ID:	3484
NCBI Accession:	<a href="#">NM_000596</a>
Pathways:	<a href="#">Myometrial Relaxation and Contraction</a> , <a href="#">ER-Nucleus Signaling</a> , <a href="#">Growth Factor Binding</a>

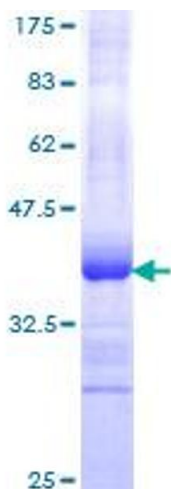
## Application Details

Application Notes:	Optimal working dilution should be determined by the investigator.
Comment:	Preparation method: in vitro, wheat germ expression system Product Quality tested by: 12.5% SDS-PAGE Stained with Coomassie Blue.
Restrictions:	For Research Use only

## Handling

Buffer:	50 mM Tris-HCl, 10 mM reduced Glutathione, pH =8.0 in the elution buffer.
Handling Advice:	Aliquot to avoid repeated freezing and thawing.
Storage:	-80 °C
Storage Comment:	Best use within three months from the date of receipt of this protein.

## Images



**Image 1.**