



[Go to Product page](#)

Datasheet for ABIN1307567

IGFBP3 Protein (AA 182-291) (GST tag)

1 Image

Overview

Quantity:	10 µg
Target:	IGFBP3
Protein Characteristics:	AA 182-291
Origin:	Human
Source:	Wheat germ
Protein Type:	Recombinant
Purification tag / Conjugate:	This IGFBP3 protein is labelled with GST tag.
Application:	Western Blotting (WB), ELISA, Affinity Purification (AP), Antibody Array (AA)

Product Details

Purpose:	IGFBP3 (Human) Recombinant Protein (Q01)
Sequence:	DSQRYKVDYE SQSTDTQNFS SESKRETEYG PCRREMEDTL NHLKFLNVLS PRGVHIPNCD KKGFKKKKQC RPSKGRKRGF CWCVDKYGQP LPGYTTKGKE DVHCYSMQSK
Characteristics:	Human IGFBP3 partial ORF (AAH64987.1, 182 a.a. - 291 a.a.) recombinant protein with GST-tag at N-terminal.
Purification:	in vitro wheat germ expression system

Target Details

Target:	IGFBP3
Alternative Name:	IGFBP3 (IGFBP3 Products)

Target Details

Background:	Full Gene Name: insulin-like growth factor binding protein 3 Synonyms: BP-53,IBP3
Gene ID:	3486
NCBI Accession:	NM_000598
Pathways:	Myometrial Relaxation and Contraction , Regulation of Muscle Cell Differentiation , Skeletal Muscle Fiber Development , Regulation of Carbohydrate Metabolic Process , Autophagy , Smooth Muscle Cell Migration , Growth Factor Binding

Application Details

Application Notes:	Optimal working dilution should be determined by the investigator.
Comment:	Preparation method: in vitro, wheat germ expression system Product Quality tested by: 12.5% SDS-PAGE Stained with Coomassie Blue.
Restrictions:	For Research Use only

Handling

Buffer:	50 mM Tris-HCl, 10 mM reduced Glutathione, pH =8.0 in the elution buffer.
Handling Advice:	Aliquot to avoid repeated freezing and thawing.
Storage:	-80 °C
Storage Comment:	Best use within three months from the date of receipt of this protein.

Images

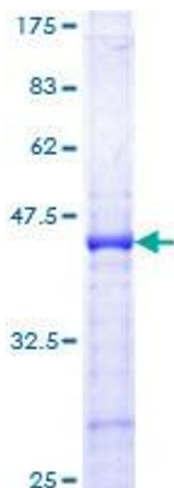


Image 1.