

Datasheet for ABIN1307573
IGFN1 Protein (AA 1-868) (GST tag)



[Go to Product page](#)

1 Image

Overview

Quantity:	10 µg
Target:	IGFN1
Protein Characteristics:	AA 1-868
Origin:	Human
Source:	Wheat germ
Protein Type:	Recombinant
Purification tag / Conjugate:	This IGFN1 protein is labelled with GST tag.
Application:	ELISA, Western Blotting (WB), Affinity Purification (AP), Antibody Array (AA)

Product Details

Purpose:	DKFZp434B1231 (Human) Recombinant Protein (P01)
Sequence:	MGWQPMGENW GCLEEMLNED QSREPPGHLG SRRSGKDGRL DIYGERRDAT RSSTSRYKPG TGSFSKDAQG PMGHFSQGLA DMEVQPGEAA TLSCTLSDL GPGTWFKDGV KLTTQDGVIF KQDGLVHSLF ITHVQGTQAG RYTFVAGDQQ SEATLTVQDS PTIAPDVTEK LREPLVVKAG KPVIVKIPFQ SHLPIQAAWR KDGAEEVVGSS DREAQVDLGD GYTRLCLPSA GRKDCGQYSV TLRSEGGSVQ AELTLQVIDK PDPPQGPMEV QDCHRAGVCL RWRPPRDNGG RTVECYVVER RQAGRSTWLK VGEAPADSTT FTDHVEPGR KYTFRVRAVT SEGAGEALES EEILVAPEAL PKAPSAPAIL SASSQGITLT WTAPRPGSA HILGYLIERR KKGSTWTAV NDQVPERRW TVADVRQGCQ YEFRVTAVAP SGPGEPPPS DAVFARDPMR PPGLVRNLQV TDRSNTSITL SWAGPDTQEG DEAQGYVVEL CSSDSLQWLP CHVGTVPVTT YAKGLRPGE GYFVRVTAVN EGGQSQPSAL DTLVQAMPVT VCPKFLVDSS TKDLLTVKVG DTVRVPVSFE AMPMPEVTWL KDGLPLPKRS VTVTKDGLTQ LLIPVAGLSD SGLYTVVLRRT LQGKEVAHSF RIRVAACPQA

Product Details

PGPIHLQENV PGTVTAEWEP SPDEAQDVPL HYAVFTRSSA HGPWHEAADR IYTNRFLLG
ILPGHEYHFR VVAKNELGAS KPSDTSQPWC IPRQRDRFTV KAPCYREPD L SQKPRFLVGL
RSHLLPQGCE CCMSCAVQGS PRPHVTWFKN DRSLEGNPAV YSTDLLGVCS LTIPSVSPKD
SGEYKAVAEN TLGQAVSTAT LIVIEPST

Characteristics: Human DKFZp434B1231 full-length ORF (NP_840059.1, 1 a.a. - 868 a.a.) recombinant protein with GST-tag at N-terminal.

Purification: in vitro wheat germ expression system

Target Details

Target: IGFN1

Alternative Name: IGFN1 ([IGFN1 Products](#))

Background: Full Gene Name: immunoglobulin-like and fibronectin type III domain containing 1
Synonyms: DKFZp434B1231,EEF1A2BP1

Gene ID: 91156

NCBI Accession: [NM_178275](#)

Application Details

Application Notes: Optimal working dilution should be determined by the investigator.

Comment: Preparation method: in vitro, wheat germ expression system
Product Quality tested by: 12.5% SDS-PAGE Stained with Coomassie Blue.

Restrictions: For Research Use only

Handling

Buffer: 50 mM Tris-HCl, 10 mM reduced Glutathione, pH =8.0 in the elution buffer.

Handling Advice: Aliquot to avoid repeated freezing and thawing.

Storage: -80 °C

Storage Comment: Best use within three months from the date of receipt of this protein.

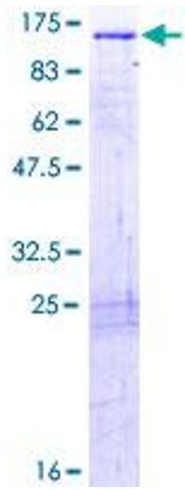


Image 1.