



[Go to Product page](#)

Datasheet for ABIN1307577

IGHA1 Protein (AA 1-500) (GST tag)

1 Image

Overview

Quantity:	10 µg
Target:	IGHA1
Protein Characteristics:	AA 1-500
Origin:	Human
Source:	Wheat germ
Protein Type:	Recombinant
Purification tag / Conjugate:	This IGHA1 protein is labelled with GST tag.
Application:	Affinity Purification (AP), Antibody Array (AA), ELISA, Western Blotting (WB)

Product Details

Purpose:	IGHA1 (Human) Recombinant Protein (P02)
Sequence:	MDWTWSILFL VAAATGAQSQ VHLVQSGAEV MSPGASVRVS CKTSGYAFHT YSIIWVRQAP GQGLEWMGWI SPSSDNTRFA KKFQGRVTLT TDTSTSTVYM ELRSLRSDDT AVYYCARRYC SYSSCQNDYY YYYMDVWGKG TTVTSSASP TSPKVPLSL CSTQPDGNVV IACLVQGFPP QEPLSVTWSE SGQGVTARNF PPSQDASGDL YTTSSQLTLP ATQCLAGKSV TCHVKHYTNP SQDVTVPCPV PSTPPTSPS TPPTPSPSCC HPRLSLHRPA LEDLLLSEA NLCTLTGLR DASGVFTFTWT PSSGKSAVQG PPDRDLCGCY SVSSVLSGCA EPWNHGKTFT CTAAYPESKT PLTATLSKSG NTFRPEVHLL PPPSEELALN ELVTLTCLAR GFSPKDVLR WLQGSQELPR EKYLTWASRQ EPSQGTTFE VTSILRVAE DWKKGDTFSC MVGHEALPLA FTQETIDRLA GKPTHVNVSV VMAEVDGTCY
Characteristics:	Human IGHA1 full-length ORF (AAH05951, 1 a.a. - 500 a.a.) recombinant protein with GST-tag at N-terminal.

Product Details

Purification: in vitro wheat germ expression system

Target Details

Target: IGHA1

Alternative IGHA1 ([IGHA1 Products](#))

Name:

Background: Full Gene Name: immunoglobulin heavy constant alpha 1

Synonyms:

FLJ14473,FLJ35065,FLJ35500,FLJ36402,FLJ39698,FLJ40001,FLJ41548,FLJ41552,FLJ41789,FLJ43248,FLJ43594,FLJ44

Gene ID: 3493

Application Details

Application Notes: Optimal working dilution should be determined by the investigator.

Comment: Preparation method: in vitro, wheat germ expression system
Product Quality tested by: 12.5% SDS-PAGE Stained with Coomassie Blue.

Restrictions: For Research Use only

Handling

Buffer: 50 mM Tris-HCl, 10 mM reduced Glutathione, pH =8.0 in the elution buffer.

Handling Advice: Aliquot to avoid repeated freezing and thawing.

Storage: -80 °C

Storage Comment: Best use within three months from the date of receipt of this protein.

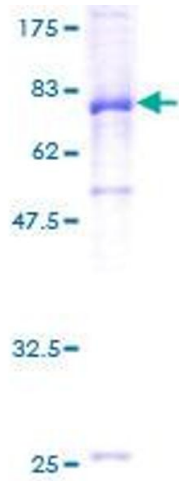


Image 1.