



[Go to Product page](#)

Datasheet for ABIN1307579

IGHA2 Protein (AA 1-477) (GST tag)

1 Image

Overview

Quantity:	10 µg
Target:	IGHA2
Protein Characteristics:	AA 1-477
Origin:	Human
Source:	Wheat germ
Protein Type:	Recombinant
Purification tag / Conjugate:	This IGHA2 protein is labelled with GST tag.
Application:	Affinity Purification (AP), Antibody Array (AA), ELISA, Western Blotting (WB)

Product Details

Purpose:	IGHA2 (Human) Recombinant Protein (P01)
Sequence:	MKHLWFFLLL VAAPRWLSQ VQLQESGPGI VKPSETLSLT CTVSGGSISS YYWSWIRQTA GKGLEWIGYI SHSGSTTYNP SLKSRVTLST DTSKNQFSLR LNSVTAADTA VYYCAHGSSW DFAFDYWGQG TLVTVSSASP TSPKVFPLSL DSTPQDGNVV VACLQVGFPP QEPLSVTWSE SGQNVTARNF PPSQDASGDL YTTSSQLTLP ATQCPDGKSV TCHVKHYTNP SQDVTVPCPV PPPPCCHPR LSLHRPALED LLLGSEANLT CTLTGLRDAS GATFTWTPSS GKSAVQGPPE RDLGCGYSVS SVLPGCAQPW NHGETFTCTA AHPELKTPLT ANITKSGNTF RPEVHLLPPP SEELALNELV TLTCARGFS PKDVLVRWLQ GSQELPREKY LTWASRQEPS QGTTTTFAVTS ILRVAEDWK KGDTFSCMVG HEALPLAFTQ KTIDRLAGKP THVNVSVVMA EVDGTCY
Characteristics:	Human IGHA2 full-length ORF (AAH73765.1, 1 a.a. - 477 a.a.) recombinant protein with GST-tag at N-terminal.

Product Details

Purification: in vitro wheat germ expression system

Target Details

Target: IGHA2

Alternative Name: IGHA2 ([IGHA2 Products](#))

Background: Full Gene Name: immunoglobulin heavy constant alpha 2 (A2m marker)
Synonyms:

Gene ID: 3494

Application Details

Application Notes: Optimal working dilution should be determined by the investigator.

Comment: Preparation method: in vitro, wheat germ expression system
Product Quality tested by: 12.5% SDS-PAGE Stained with Coomassie Blue.

Restrictions: For Research Use only

Handling

Buffer: 50 mM Tris-HCl, 10 mM reduced Glutathione, pH =8.0 in the elution buffer.

Handling Advice: Aliquot to avoid repeated freezing and thawing.

Storage: -80 °C

Storage Comment: Best use within three months from the date of receipt of this protein.

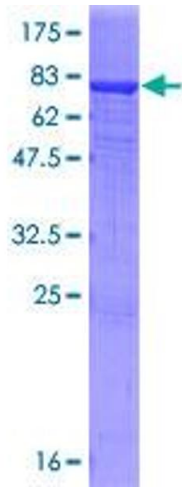


Image 1.