



[Go to Product page](#)

Datasheet for ABIN1307583

## IGHG1 Protein (AA 1-479) (GST tag)

### 1 Image

#### Overview

Quantity:	10 µg
Target:	IGHG1
Protein Characteristics:	AA 1-479
Origin:	Human
Source:	Wheat germ
Protein Type:	Recombinant
Purification tag / Conjugate:	This IGHG1 protein is labelled with GST tag.
Application:	ELISA, Western Blotting (WB), Antibody Array (AA), Affinity Purification (AP)

#### Product Details

Purpose:	IGHG1 (Human) Recombinant Protein (P01)
Sequence:	MELGLSWIFL LAILKGVQCE VQLVESGGGL VQPGRSLRLS CAASGFTFDD YAMHWVRQVP GKGLEWVSGI SCNSGSIGYA DSVKGRFTIS RDNAKKSLEYL QMNSLRAEDT ALYYCAKDIE LDIVVVPAPM RGS LGFDYWG QGTLTVVSSA STKGPSVFPL APSSKSTSGG TAALGCLVKD YFPEPVTVSW NSGALTSGVH TFP AVLQSSG LYSLSVVTV PSSSLGTQTY ICNVNHKPSN TKVDKKVEPK SCDKTHTCP CPAPPELLGGP SVFLFPPKPK DTL MISRTPE VTCVVVDVSH EDPEVKFNWY VDGVEVHNAK TKPREEQYNS TYRVS VLVTV LHQDWLNGKE YKCKVSNKAL PAPIEKTISK AKGQPREPQV YTLPPSRDEL TKNQVSLTCL VKGFYPSDIA VEWESNGQPE NNYKTTTPVL DSDGSFFLYS KLTVDKSRWQ QGNVFSCSVM HEALHNHYTQ KLSLSLSPGK
Characteristics:	Human IGHG1 full-length ORF ( AAH06402.1, 1 a.a. - 479 a.a.) recombinant protein with GST-tag at N-terminal.

## Product Details

---

Purification: in vitro wheat germ expression system

## Target Details

---

Target: IGHG1

Alternative Name: IGHG1 ([IGHG1 Products](#))

Background: Full Gene Name: immunoglobulin heavy constant gamma 1 (G1m marker)  
Synonyms:

Gene ID: 3500

## Application Details

---

Application Notes: Optimal working dilution should be determined by the investigator.

Comment: Preparation method: in vitro, wheat germ expression system  
Product Quality tested by: 12.5% SDS-PAGE Stained with Coomassie Blue.

Restrictions: For Research Use only

## Handling

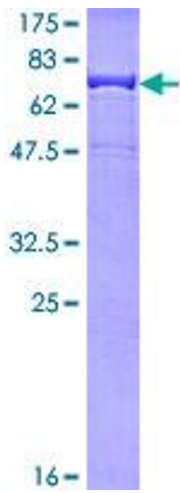
---

Buffer: 50 mM Tris-HCl, 10 mM reduced Glutathione, pH =8.0 in the elution buffer.

Handling Advice: Aliquot to avoid repeated freezing and thawing.

Storage: -80 °C

Storage Comment: Best use within three months from the date of receipt of this protein.



**Image 1.**