



## Datasheet for ABIN1307587 IGHG4 Protein (GST tag)



[Go to Product page](#)

### 1 Image

#### Overview

Quantity:	10 µg
Target:	IGHG4
Origin:	Human
Source:	Wheat germ
Protein Type:	Recombinant
Purification tag / Conjugate:	This IGHG4 protein is labelled with GST tag.
Application:	ELISA, Western Blotting (WB), Antibody Array (AA), Affinity Purification (AP)

#### Product Details

Purpose:	IGHG4 (Human) Recombinant Protein (P01)
Sequence:	MDLLCKNMKH LWFFLLLVA A PRWVLSRLQL QESGPGLLKP SVTLSLTCTV SGDSVASSSY YWGWRQPPG KGLEWIGTIN FSGNMYSPS LRSRVTMSAD MSENSFY LKL DSVTAADTAV YYCAAGHLVM GFGAHWGQ GK LSVSPASTK GPSVFPLAPC SRSTSESTAA LGCLVKDYFP EPVTVSWNSG ALTSGVHTFP AVLQSSGLYS LSSVVTVPSS SLGTKTYTCN VDHKPSNTKV DKRVESKYGP PCPSCAPEF LGGPSVFLFP PKPKDTLMIS RTPEVTCVVV DVSQEDPEVQ FNWYVDGVEV HNAKTKPREE QFNSTYRVVS VLTVLHQDWL NGKEYKCKVS NKGLPSSIEK TISKAKGQPR EPQVYTLPPS QEEMTKNQVS LTCLVKGFYP SDIAVEWESN GQPENNYKTT PPVLDSGSGF FLYSRLTVDK SRWQEGNVFS CSVMHEALHN HYTQKSLSL S LGK
Characteristics:	Human IGHG4 full-length ORF ( AAH25985.1, 1 a.a. - 473 a.a.) recombinant protein with GST-tag at N-terminal.
Purification:	in vitro wheat germ expression system

## Target Details

Target:	IGHG4
Alternative Name:	IGHG4 ( <a href="#">IGHG4 Products</a> )
Background:	Gene: immunoglobulin heavy constant gamma 4 (G4m marker) Synonyms: MGC117419
Gene ID:	3503

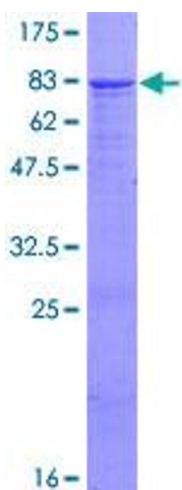
## Application Details

Application Notes:	Optimal working dilution should be determined by the investigator.
Restrictions:	For Research Use only

## Handling

Buffer:	50 mM Tris-HCl, 10 mM reduced Glutathione, pH =8.0 in the elution buffer.
Handling Advice:	Aliquot to avoid repeated freezing and thawing.
Storage:	-80 °C
Storage Comment:	Best use within three months from the date of receipt of this protein.

## Images



**Image 1.**