



[Go to Product page](#)

Datasheet for ABIN1307589

IGHM Protein (AA 1-489) (GST tag)

1 Image

Overview

Quantity:	10 µg
Target:	IGHM
Protein Characteristics:	AA 1-489
Origin:	Human
Source:	Wheat germ
Protein Type:	Recombinant
Purification tag / Conjugate:	This IGHM protein is labelled with GST tag.
Application:	Affinity Purification (AP), Antibody Array (AA), ELISA, Western Blotting (WB)

Product Details

Purpose:	IGHM (Human) Recombinant Protein (P01)
Sequence:	MNYWYGQRTL VTVSSGSASA PTLFPLVSCE NSPSTSSVA VGCLAQDFLP DSITFSWKYK NNSDISSTRG FPSVLRGGKY AATSQVLLPS KDVMQGTDEH VVCKVQHPNG NKEKNVPLPV IAELPPKVSF VVPPRDGFFG NPRKSKLICQ ATGFSPRQIQ VSWLREGKQV GSGVTTDQVQ AEAKESGPTT YKVTSTLTIK ESDWLGQSMF TCRVDHRGLT FQONASSMCV PDQDPAIRVF AIPPSFASIF LTKSTKLTLCL VTDLTTYDSV TISWTRQNGE AVKTHTNISE SHPNATFSAV GEASICEDDW NSGERFTCTV THTDLPSPLK QTISRPKGVA LHRPDVYLLP PAREQLNLRE SATITCLVTG FSPADV FVQW MQRGQPLSPE KYVTSAPMPE PQAPGRYFAH SILTVSEEEW NTGETYTCVV AHEALPNRVT ERTVDKSTEG EVSADEEGFE NLWATASTFI VLFLLSLFYS TTVTLFKVK
Characteristics:	Human IGHM full-length ORF (AAH89412.1, 1 a.a. - 489 a.a.) recombinant protein with GST-tag at N-terminal.

Product Details

Purification: in vitro wheat germ expression system

Target Details

Target: IGHM

Alternative Name: IGHM ([IGHM Products](#))

Background: Full Gene Name: immunoglobulin heavy constant mu
Synonyms: DKFZp686l15196,DKFZp686l15212,FLJ00385,MGC104996,MGC52291,MU,VH

Gene ID: 3507

Application Details

Application Notes: Optimal working dilution should be determined by the investigator.

Comment: Preparation method: in vitro, wheat germ expression system
Product Quality tested by: 12.5% SDS-PAGE Stained with Coomassie Blue.

Restrictions: For Research Use only

Handling

Buffer: 50 mM Tris-HCl, 10 mM reduced Glutathione, pH =8.0 in the elution buffer.

Handling Advice: Aliquot to avoid repeated freezing and thawing.

Storage: -80 °C

Storage Comment: Best use within three months from the date of receipt of this protein.

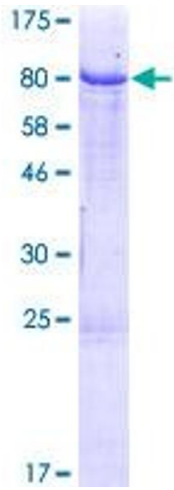


Image 1.