



[Go to Product page](#)

Datasheet for ABIN1307595

## IGKC Protein (AA 1-236) (GST tag)

### 1 Image

#### Overview

Quantity:	10 µg
Target:	IGKC
Protein Characteristics:	AA 1-236
Origin:	Human
Source:	Wheat germ
Protein Type:	Recombinant
Purification tag / Conjugate:	This IGKC protein is labelled with GST tag.
Application:	Affinity Purification (AP), Antibody Array (AA), ELISA, Western Blotting (WB)

#### Product Details

Purpose:	IGKC (Human) Recombinant Protein (P01)
Sequence:	METPAQLLFL LLLWLPDSTG ENVLTQSPGT LSLSPGERAT LSCRASQSLS SSYLAWYQQK PGQAPRLLIY GVSSRATGIP DRFSGSGSGT DFTLTISRLE PEDFAVYYCQ QYGTSRPITF GQGTRLDIKR TVAAPSVFIF PPSDEQLKSG TASVVCLLNN FYPREAKVQW KVDNALQSGN SQESVTEQDS KDSTYLSST LTLKADY EK HKVYACEVTH QGLSSPVTKS FNRGEC
Characteristics:	Human IGKC full-length ORF ( AAH67092.1, 1 a.a. - 236 a.a.) recombinant protein with GST-tag at N-terminal.
Purification:	in vitro wheat germ expression system

#### Target Details

Target:	IGKC
---------	------

## Target Details

Alternative Name:	IGKC ( <a href="#">IGKC Products</a> )
Background:	Full Gene Name: immunoglobulin kappa constant Synonyms: HCAK1,Km,MGC111575,MGC62011,MGC72072,MGC88770,MGC88771,MGC88809
Gene ID:	3514

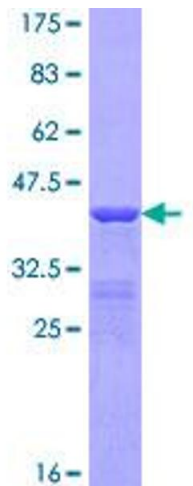
## Application Details

Application Notes:	Optimal working dilution should be determined by the investigator.
Comment:	Preparation method: in vitro, wheat germ expression system Product Quality tested by: 12.5% SDS-PAGE Stained with Coomassie Blue.
Restrictions:	For Research Use only

## Handling

Buffer:	50 mM Tris-HCl, 10 mM reduced Glutathione, pH =8.0 in the elution buffer.
Handling Advice:	Aliquot to avoid repeated freezing and thawing.
Storage:	-80 °C
Storage Comment:	Best use within three months from the date of receipt of this protein.

## Images



**Image 1.**