

Datasheet for ABIN1307599

## IGKV1OR2-108 Protein (AA 1-95) (GST tag)



[Go to Product page](#)

### 1 Image

#### Overview

Quantity:	10 µg
Target:	IGKV1OR2-108
Protein Characteristics:	AA 1-95
Origin:	Human
Source:	Wheat germ
Protein Type:	Recombinant
Purification tag / Conjugate:	This IGKV1OR2-108 protein is labelled with GST tag.
Application:	Affinity Purification (AP), Antibody Array (AA), ELISA, Western Blotting (WB)

#### Product Details

Purpose:	IGKV1OR2-108 (Human) Recombinant Protein (Q01)
Sequence:	DIQVTQSPSS LSASVGDRVT ITCRASQGIS NGLSWYQQKP GQAPTLIIYA ASSLQSGVPS RFGSGSGTD FTLTISSLQP EDVATYYCLQ DYTTP
Characteristics:	Human IGKV1OR2-108 partial ORF (CAA36171.1, 1 a.a. - 95 a.a.) recombinant protein with GST-tag at N-terminal.
Purification:	in vitro wheat germ expression system

#### Target Details

Target:	IGKV1OR2-108
Alternative Name:	IGKV1OR2-108 ( <a href="#">IGKV1OR2-108 Products</a> )

## Target Details

Background:	Full Gene Name: immunoglobulin kappa variable 1/OR2-108 (non-functional) Synonyms: IGKV10R2108,IGO1
Gene ID:	28862

## Application Details

Application Notes:	Optimal working dilution should be determined by the investigator.
Comment:	Preparation method: in vitro, wheat germ expression system Product Quality tested by: 12.5% SDS-PAGE Stained with Coomassie Blue.
Restrictions:	For Research Use only

## Handling

Buffer:	50 mM Tris-HCl, 10 mM reduced Glutathione, pH =8.0 in the elution buffer.
Handling Advice:	Aliquot to avoid repeated freezing and thawing.
Storage:	-80 °C
Storage Comment:	Best use within three months from the date of receipt of this protein.

## Images

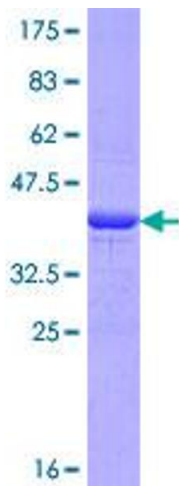


Image 1.