



[Go to Product page](#)

Datasheet for ABIN1307603

IGLC2 Protein (AA 1-235) (GST tag)

1 Image

Overview

Quantity:	10 µg
Target:	IGLC2
Protein Characteristics:	AA 1-235
Origin:	Human
Source:	Wheat germ
Protein Type:	Recombinant
Purification tag / Conjugate:	This IGLC2 protein is labelled with GST tag.
Application:	Affinity Purification (AP), Antibody Array (AA), ELISA, Western Blotting (WB)

Product Details

Purpose:	IGLC2 (Human) Recombinant Protein (P01)
Sequence:	MAFPLLLTL LTHCAGSWAQ SVLTQPPSAS GTPGQRVPIS CSGSSSNIGS NTVNWWYQQFP GTAPKLLIYS NNQRPSGVPD RFSGSKSGTS ASLAISGLQS EDDAVYHCAT WDDNLNSWVF GGGTKLTVLS QPKAAPSVTL FPPSSEELQA NKATLVCLIS DFYPGAVTVA WKADSSPVKA GVETTTPSKQ SNNKYAASSY LSLTPEQWKS HKSYSQCQVTH EGSTVEKTVA PTECS
Characteristics:	Human IGLC2 full-length ORF (AAH93098.1, 1 a.a. - 235 a.a.) recombinant protein with GST-tag at N-terminal.
Purification:	in vitro wheat germ expression system

Target Details

Target:	IGLC2
---------	-------

Target Details

Alternative Name:	IGLC2 (IGLC2 Products)
Background:	Full Gene Name: immunoglobulin lambda constant 2 (Kern-Oz- marker) Synonyms: IGLC,MGC20392,MGC45681
Gene ID:	3538

Application Details

Application Notes:	Optimal working dilution should be determined by the investigator.
Comment:	Preparation method: in vitro, wheat germ expression system Product Quality tested by: 12.5% SDS-PAGE Stained with Coomassie Blue.
Restrictions:	For Research Use only

Handling

Buffer:	50 mM Tris-HCl, 10 mM reduced Glutathione, pH =8.0 in the elution buffer.
Handling Advice:	Aliquot to avoid repeated freezing and thawing.
Storage:	-80 °C
Storage Comment:	Best use within three months from the date of receipt of this protein.

Images

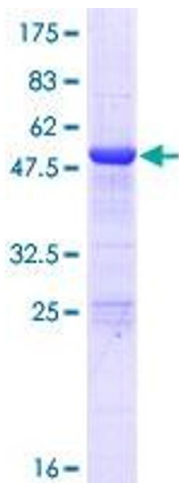


Image 1.