



[Go to Product page](#)

Datasheet for ABIN1307617

IGSF1 Protein (AA 220-310) (GST tag)

1 Image

Overview

Quantity:	10 µg
Target:	IGSF1 (INHBP)
Protein Characteristics:	AA 220-310
Origin:	Human
Source:	Wheat germ
Protein Type:	Recombinant
Purification tag / Conjugate:	This IGSF1 protein is labelled with GST tag.
Application:	Western Blotting (WB), ELISA, Affinity Purification (AP), Antibody Array (AA)

Product Details

Purpose:	IGSF1 (Human) Recombinant Protein (Q01)
Sequence:	VVAGLYPKPT LTAHPGPIMA PGESLNLRCQ GPIYGMTFAL MRVEDLEKSF YHKKTIKNEA NFFFQSLKIQ DTGHYLCFYF DASYRGSLLS D
Characteristics:	Human IGSF1 partial ORF (NP_001546, 220 a.a. - 310 a.a.) recombinant protein with GST-tag at N-terminal.
Purification:	in vitro wheat germ expression system

Target Details

Target:	IGSF1 (INHBP)
Alternative Name:	IGSF1 (INHBP Products)

Target Details

Background:	Full Gene Name: immunoglobulin superfamily, member 1 Synonyms: IGCD1,IGDC1,INHBP,KIAA0364,MGC75490,PGSF2
Gene ID:	3547
NCBI Accession:	NM_001555

Application Details

Application Notes:	Optimal working dilution should be determined by the investigator.
Comment:	Preparation method: in vitro, wheat germ expression system Product Quality tested by: 12.5% SDS-PAGE Stained with Coomassie Blue.
Restrictions:	For Research Use only

Handling

Buffer:	50 mM Tris-HCl, 10 mM reduced Glutathione, pH =8.0 in the elution buffer.
Handling Advice:	Aliquot to avoid repeated freezing and thawing.
Storage:	-80 °C
Storage Comment:	Best use within three months from the date of receipt of this protein.

Images

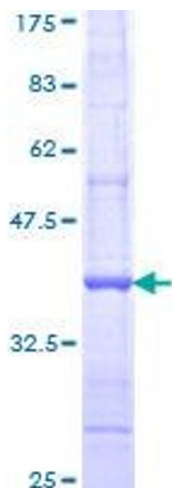


Image 1.