



[Go to Product page](#)

Datasheet for ABIN1307624

IGSF21 Protein (AA 1-467) (GST tag)

1 Image

Overview

Quantity:	10 µg
Target:	IGSF21
Protein Characteristics:	AA 1-467
Origin:	Human
Source:	Wheat germ
Protein Type:	Recombinant
Purification tag / Conjugate:	This IGSF21 protein is labelled with GST tag.
Application:	ELISA, Western Blotting (WB), Affinity Purification (AP), Antibody Array (AA)

Product Details

Purpose:	IGSF21 (Human) Recombinant Protein (P01)
Sequence:	MRTAPSLRRC VCLLLAAILD LARGYLTVNI EPLPPVVAGD AVTLKCNFKT DGRMREIVWY RVTGGTIKQ KIFTFDAMFS TNYSHMENYR KREDLVYQST VRLPEVRISD NGPYECHVGI YDRATREKVV LASGNIFLNV MAPPTSIEVV AADTPAPFSR YQAQNFTLVC IVSGGKPAPM VYFKRDGEPI DAVPLSEPPA ASSGPLQDSR PFRSLLHRDL DDTKMQKSLS LLDAENRGGR PYTERPSRGL TDPNILLQP TTENIPETVV SREFPRWVHS AEPTYFLRHS RTPSSDGTVE VRALLTWTLN PQIDNEALFS CEVKHPALSM PMQAEVTLVA PKGPKIVMTP SRARVGDTVR ILVHGFQNEV FPEPMFTWTR VGSRLLDGSA EFDGKELVLE RVPaelNGSM YRCTAQNPLG STDTHTRLIV FENPNIPRGT EDSNGSIGPT GARLTLVLAL TVILELT
Characteristics:	Human IGSF21 full-length ORF (AAH07618.1, 1 a.a. - 467 a.a.) recombinant protein with GST-tag at N-terminal.

Product Details

Purification: in vitro wheat germ expression system

Target Details

Target: IGSF21

Alternative Name: IGSF21 ([IGSF21 Products](#))

Background: Full Gene Name: immunoglobulin superfamily, member 21
Synonyms: FLJ41177,MGC15730

Gene ID: 84966

Application Details

Application Notes: Optimal working dilution should be determined by the investigator.

Comment: Preparation method: in vitro, wheat germ expression system
Product Quality tested by: 12.5% SDS-PAGE Stained with Coomassie Blue.

Restrictions: For Research Use only

Handling

Buffer: 50 mM Tris-HCl, 10 mM reduced Glutathione, pH =8.0 in the elution buffer.

Handling Advice: Aliquot to avoid repeated freezing and thawing.

Storage: -80 °C

Storage Comment: Best use within three months from the date of receipt of this protein.

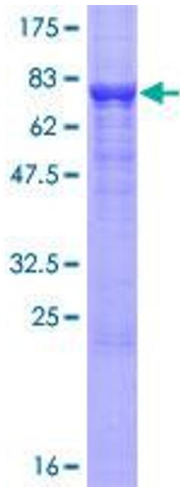


Image 1.