

Datasheet for ABIN1307642

IKKi/IKKe Protein (AA 541-640) (GST tag)



[Go to Product page](#)

1 Image

Overview

Quantity:	10 µg
Target:	IKKi/IKKe (IKBKE)
Protein Characteristics:	AA 541-640
Origin:	Human
Source:	Wheat germ
Protein Type:	Recombinant
Purification tag / Conjugate:	This IKKi/IKKe protein is labelled with GST tag.
Application:	ELISA, Western Blotting (WB), Affinity Purification (AP), Antibody Array (AA)

Product Details

Purpose:	IKBKE (Human) Recombinant Protein (Q01)
Sequence:	QQIQCYLDKM NFIYKQFKKS RMRPGLGYNE EQIHKLDKVN FSHLAKRLLQ VFQEECVQKY QASLVTHGKR MRVVHETRNH LRLVGCSVAA CNTEAQGVQE
Characteristics:	Human IKBKE partial ORF (NP_054721, 541 a.a. - 640 a.a.) recombinant protein with GST-tag at N-terminal.
Purification:	in vitro wheat germ expression system

Target Details

Target:	IKKi/IKKe (IKBKE)
Alternative Name:	IKBKE (IKBKE Products)

Target Details

Background: Gene: inhibitor of kappa light polypeptide gene enhancer in B-cells, kinase epsilon
Synonyms: IKK-i, IKKE, IKKI, KIAA0151, MGC125294, MGC125295, MGC125297

Gene ID: 9641

NCBI Accession: [NM_014002](#)

Pathways: [TLR Signaling](#), [Activation of Innate immune Response](#), [Hepatitis C](#), [Toll-Like Receptors Cascades](#)

Application Details

Application Notes: Optimal working dilution should be determined by the investigator.

Restrictions: For Research Use only

Handling

Buffer: 50 mM Tris-HCl, 10 mM reduced Glutathione, pH =8.0 in the elution buffer.

Handling Advice: Aliquot to avoid repeated freezing and thawing.

Storage: -80 °C

Storage Comment: Best use within three months from the date of receipt of this protein.

Images

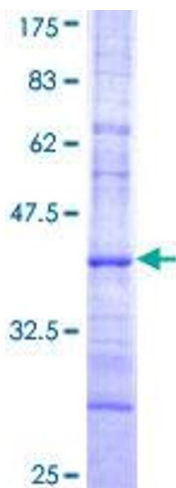


Image 1.