



[Go to Product page](#)

Datasheet for ABIN1307676

## IL12A Protein (AA 144-253) (GST tag)

### 1 Image

#### Overview

Quantity:	10 µg
Target:	IL12A
Protein Characteristics:	AA 144-253
Origin:	Human
Source:	Wheat germ
Protein Type:	Recombinant
Purification tag / Conjugate:	This IL12A protein is labelled with GST tag.
Application:	Western Blotting (WB), ELISA, Affinity Purification (AP), Antibody Array (AA)

#### Product Details

Purpose:	IL12A (Human) Recombinant Protein (Q01)
Sequence:	CLASRKTSFM MALCLSSIYE DLKMYQVEFK TMNAKLLMDP KRQIFLDQNM LAVIDELMQA LNFNSETVPQ KSSLEEPDFY KTKIKLCILL HAFRIRAVTI DRVMSYLNAS
Characteristics:	Human IL12A partial ORF ( NP_000873.2, 144 a.a. - 253 a.a.) recombinant protein with GST-tag at N-terminal.
Purification:	in vitro wheat germ expression system

#### Target Details

Target:	IL12A
Alternative Name:	IL12A ( <a href="#">IL12A Products</a> )

## Target Details

Background:	Full Gene Name: interleukin 12A (natural killer cell stimulatory factor 1, cytotoxic lymphocyte maturation factor 1, p35) Synonyms: CLMF,IL-12A,NFSK,NKSF1,P35
Gene ID:	3592
NCBI Accession:	<a href="#">NM_000882</a>
Pathways:	<a href="#">JAK-STAT Signaling</a> , <a href="#">Regulation of Leukocyte Mediated Immunity</a> , <a href="#">Positive Regulation of Immune Effector Process</a> , <a href="#">Activated T Cell Proliferation</a>

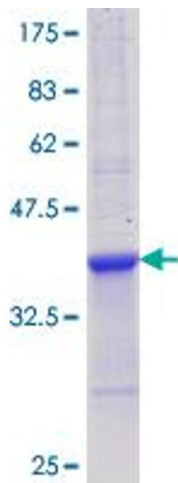
## Application Details

Application Notes:	Optimal working dilution should be determined by the investigator.
Comment:	Preparation method: in vitro, wheat germ expression system Product Quality tested by: 12.5% SDS-PAGE Stained with Coomassie Blue.
Restrictions:	For Research Use only

## Handling

Buffer:	50 mM Tris-HCl, 10 mM reduced Glutathione, pH =8.0 in the elution buffer.
Handling Advice:	Aliquot to avoid repeated freezing and thawing.
Storage:	-80 °C
Storage Comment:	Best use within three months from the date of receipt of this protein.

## Images



**Image 1.**