

Datasheet for ABIN1307726

## IL18R1 Protein (AA 22-121) (GST tag)



[Go to Product page](#)

### 1 Image

#### Overview

Quantity:	10 µg
Target:	IL18R1
Protein Characteristics:	AA 22-121
Origin:	Human
Source:	Wheat germ
Protein Type:	Recombinant
Purification tag / Conjugate:	This IL18R1 protein is labelled with GST tag.
Application:	Western Blotting (WB), ELISA, Affinity Purification (AP), Antibody Array (AA)

#### Product Details

Purpose:	IL18R1 (Human) Recombinant Protein (Q01)
Sequence:	CTSRPHITVV EGEPLYLKHC SCSLAHEIET TTKSWYKSSG SQEHVELNPR SSSRIALHDC VLEFWPVELN DTGSYFFQMK NYTQKWKLNV IRRNKHSCFT
Characteristics:	Human IL18R1 partial ORF ( NP_003846, 22 a.a. - 121 a.a.) recombinant protein with GST-tag at N-terminal.
Purification:	in vitro wheat germ expression system

#### Target Details

Target:	IL18R1
Alternative Name:	IL18R1 ( <a href="#">IL18R1 Products</a> )

## Target Details

Background:	Full Gene Name: interleukin 18 receptor 1 Synonyms: CD218a,CDw218a,IL-1Rrp,IL18RA,IL1RRP
Gene ID:	8809
NCBI Accession:	<a href="#">NM_003855</a>

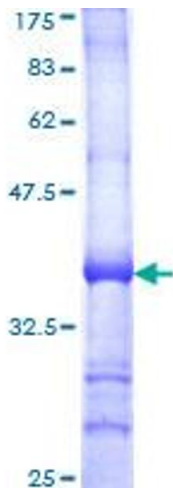
## Application Details

Application Notes:	Optimal working dilution should be determined by the investigator.
Comment:	Preparation method: in vitro, wheat germ expression system Product Quality tested by: 12.5% SDS-PAGE Stained with Coomassie Blue.
Restrictions:	For Research Use only

## Handling

Buffer:	50 mM Tris-HCl, 10 mM reduced Glutathione, pH =8.0 in the elution buffer.
Handling Advice:	Aliquot to avoid repeated freezing and thawing.
Storage:	-80 °C
Storage Comment:	Best use within three months from the date of receipt of this protein.

## Images



**Image 1.**