



[Go to Product page](#)

Datasheet for ABIN1307736

## IL1A Protein (AA 172-271) (GST tag)

### 1 Image

#### Overview

Quantity:	10 µg
Target:	IL1A
Protein Characteristics:	AA 172-271
Origin:	Human
Source:	Wheat germ
Protein Type:	Recombinant
Purification tag / Conjugate:	This IL1A protein is labelled with GST tag.
Application:	Western Blotting (WB), ELISA, Antibody Array (AA), Affinity Purification (AP)

#### Product Details

Purpose:	IL1A (Human) Recombinant Protein (Q01)
Sequence:	KSSKDDAKIT VILRISKTKL YVTAQDEDQP VLLKEMPEIP KTITGSETNL LFFWETHGTK NYFTSVAHPN LFIATKQDYW VCLAGGPPSI TDFQILENQA
Characteristics:	Human IL1A partial ORF ( AAH13142, 172 a.a. - 271 a.a.) recombinant protein with GST-tag at N-terminal.
Purification:	in vitro wheat germ expression system

#### Target Details

Target:	IL1A
Alternative Name:	IL1A ( <a href="#">IL1A Products</a> )

## Target Details

Background:	Full Gene Name: interleukin 1, alpha Synonyms: IL-1A,IL1,IL1-ALPHA,IL1F1
Gene ID:	3552
Pathways:	<a href="#">NF-kappaB Signaling</a> , <a href="#">Autophagy</a> , <a href="#">Cancer Immune Checkpoints</a>

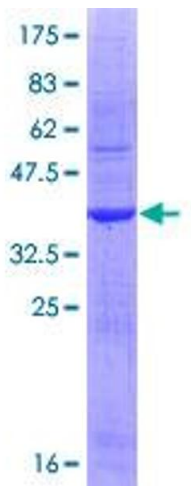
## Application Details

Application Notes:	Optimal working dilution should be determined by the investigator.
Comment:	Preparation method: in vitro, wheat germ expression system Product Quality tested by: 12.5% SDS-PAGE Stained with Coomassie Blue.
Restrictions:	For Research Use only

## Handling

Buffer:	50 mM Tris-HCl, 10 mM reduced Glutathione, pH =8.0 in the elution buffer.
Handling Advice:	Aliquot to avoid repeated freezing and thawing.
Storage:	-80 °C
Storage Comment:	Best use within three months from the date of receipt of this protein.

## Images



**Image 1.**