

Datasheet for ABIN1307742

IL-1 beta Protein (AA 170-269) (GST tag)



[Go to Product page](#)

1 Image

Overview

Quantity:	10 µg
Target:	IL-1 beta (IL1B)
Protein Characteristics:	AA 170-269
Origin:	Human
Source:	Wheat germ
Protein Type:	Recombinant
Purification tag / Conjugate:	This IL-1 beta protein is labelled with GST tag.
Application:	Western Blotting (WB), ELISA, Affinity Purification (AP), Antibody Array (AA)

Product Details

Purpose:	IL1B (Human) Recombinant Protein (Q01)
Sequence:	DKIPVALGLK EKNLYLSCVL KDDKPTLQLE SVDPKNYPKK KMEKRFVFNK IEINNKLEFE SAQFPNWWYIS TSAENMPVF LGGTKGGQDI TDFTMQFVSS
Characteristics:	Human IL1B partial ORF (AAH08678, 170 a.a. - 269 a.a.) recombinant protein with GST-tag at N-terminal.
Purification:	in vitro wheat germ expression system

Target Details

Target:	IL-1 beta (IL1B)
Alternative Name:	IL1B (IL1B Products)

Target Details

Background:	Full Gene Name: interleukin 1, beta Synonyms: IL-1,IL1-BETA,IL1F2
Gene ID:	3553
Pathways:	NF-kappaB Signaling , Interferon-gamma Pathway , TLR Signaling , Negative Regulation of Hormone Secretion , Cellular Response to Molecule of Bacterial Origin , Carbohydrate Homeostasis , Glycosaminoglycan Metabolic Process , Myometrial Relaxation and Contraction , Regulation of Leukocyte Mediated Immunity , Positive Regulation of Immune Effector Process , Autophagy , Cancer Immune Checkpoints , Inflammasome

Application Details

Application Notes:	Optimal working dilution should be determined by the investigator.
Comment:	Preparation method: in vitro, wheat germ expression system Product Quality tested by: 12.5% SDS-PAGE Stained with Coomassie Blue.
Restrictions:	For Research Use only

Handling

Buffer:	50 mM Tris-HCl, 10 mM reduced Glutathione, pH =8.0 in the elution buffer.
Handling Advice:	Aliquot to avoid repeated freezing and thawing.
Storage:	-80 °C
Storage Comment:	Best use within three months from the date of receipt of this protein.

Images

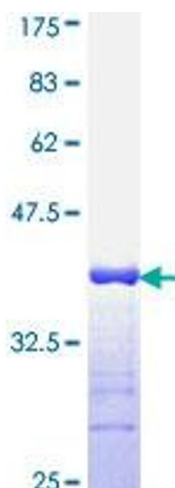


Image 1.