



[Go to Product page](#)

Datasheet for ABIN1307745
IL36A/IL1F6 Protein (AA 1-158) (GST tag)

1 Image

Overview

Quantity:	10 µg
Target:	IL36A/IL1F6 (IL1F6)
Protein Characteristics:	AA 1-158
Origin:	Human
Source:	Wheat germ
Protein Type:	Recombinant
Purification tag / Conjugate:	This IL36A/IL1F6 protein is labelled with GST tag.
Application:	ELISA, Western Blotting (WB), Affinity Purification (AP), Antibody Array (AA)

Product Details

Purpose:	IL1F6 (Human) Recombinant Protein (P01)
Sequence:	MEKALKIDTP QQGSIQDINH RVWVLQDQTL IAVPRKDRMS PVTIALISCR HVETLEKDRG NPIYLGLNGL NLCLMCAKVG DQPTLQLKEK DIMDLYNQPE PVKSFLFYHS QSGRNSTFES VAFPGWFIIV SSEGGCPLIL TQELGKANTT DFGLTMLF
Characteristics:	Human IL1F6 full-length ORF (NP_055255.1, 1 a.a. - 158 a.a.) recombinant protein with GST-tag at N-terminal.
Purification:	in vitro wheat germ expression system

Target Details

Target:	IL36A/IL1F6 (IL1F6)
Alternative Name:	IL1F6 (IL1F6 Products)

Target Details

Background:	Full Gene Name: interleukin 1 family, member 6 (epsilon) Synonyms: FIL1,FIL1(EPSILON),FIL1E,IL-1F6,IL1(EPSILON),MGC129552,MGC129553
Gene ID:	27179
NCBI Accession:	NM_014440
Pathways:	Cancer Immune Checkpoints

Application Details

Application Notes:	Optimal working dilution should be determined by the investigator.
Comment:	Preparation method: in vitro, wheat germ expression system Product Quality tested by: 12.5% SDS-PAGE Stained with Coomassie Blue.
Restrictions:	For Research Use only

Handling

Buffer:	50 mM Tris-HCl, 10 mM reduced Glutathione, pH =8.0 in the elution buffer.
Handling Advice:	Aliquot to avoid repeated freezing and thawing.
Storage:	-80 °C
Storage Comment:	Best use within three months from the date of receipt of this protein.

Images

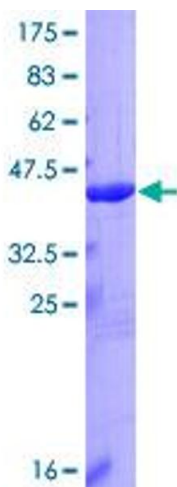


Image 1.